

City of Boynton Beach Municipal Police Officers' Retirement Fund

Actuarial Valuation Report as of October 1, 2025

Annual Employer Contribution for the Fiscal Year
Ending September 30, 2027





May 4, 2026

Board of Trustees
City of Boynton Beach Municipal
Police Officers' Retirement Fund
Boynton Beach, Florida

Dear Board Members:

The results of the October 1, 2025 Annual Actuarial Valuation of the City of Boynton Beach Municipal Police Officers' Retirement Fund are presented in this report.

This report was prepared at the request of the Board and is intended for use by the Retirement System and those designated or approved by the Board. This report may be provided to parties other than the System only in its entirety and only with the permission of the Board. GRS is not responsible for unauthorized use of this report.

The purpose of the valuation is to measure the System's funding progress, to determine the employer contribution rate for the fiscal year ending September 30, 2027, and to present the actuarial information for Governmental Accounting Standards Board (GASB) Statement No. 67. This report also includes estimated GASB Statement No. 67 information for the fiscal year ending September 30, 2026. This report should not be relied on for any purpose other than the purposes described herein. Determinations of financial results associated with the benefits described in this report, for purposes other than those identified above may be significantly different.

The contribution rate in this report is determined using the actuarial assumptions and methods disclosed in Section B of this report. This report includes risk metrics in section A, but does not include a robust assessment of the risks of future experience not meeting the actuarial assumptions. A robust assessment of these risks was outside the scope of this assignment.

This valuation assumed the continuing ability of the plan sponsor to make the contributions necessary to fund this plan. A determination regarding whether or not the plan sponsor is actually able to do so is outside our scope of expertise and was not performed.

The findings in this report are based on data or other information through September 30, 2025. The valuation was based upon information furnished by the Plan Administrator concerning Retirement Plan benefits, financial transactions, plan provisions and active members, terminated members, retirees and beneficiaries. We checked for internal and year-to-year consistency, but did not audit the data. We are not responsible for the accuracy or completeness of the information provided by the Plan Administrator.

This report was prepared using certain assumptions approved by the Board and prescribed by the Florida Statutes as described in the section of this report entitled Actuarial Assumptions and Cost Methods. The investment return assumption was prescribed by the Board and the assumed mortality rates detailed in the

Actuarial Assumptions and Cost Methods section were prescribed by Chapter 112.63, Florida Statutes. The combined effect of the assumptions, excluding prescribed assumptions or methods set by law, is expected to have no significant bias (i.e. not significantly optimistic or pessimistic). All actuarial assumptions used in this report are reasonable for purposes of this valuation.

This report was prepared using our proprietary valuation model and related software which in our professional judgment has the capability to provide results that are consistent with the purposes of the valuation and this report and has no material limitations or known weaknesses . We performed tests to ensure that the model reasonably represents that which is intended to be modeled.

This report has been prepared by actuaries who have substantial experience valuing public employee retirement systems. To the best of our knowledge the information contained in this report is accurate and fairly presents the actuarial position of the Retirement Plan as of the valuation date. All calculations have been made in conformity with generally accepted actuarial principles and practices, with the Actuarial Standards of Practice issued by the Actuarial Standards Board, and with applicable statutes.

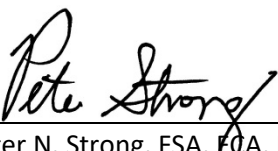
Peter N. Strong and Jeffrey Amrose are members of the American Academy of Actuaries. These actuaries meet the Academy's Qualification Standards to render the actuarial opinions contained herein. The signing actuaries are independent of the plan sponsor.

This actuarial valuation and/or cost determination was prepared and completed by us or under our direct supervision, and we acknowledge responsibility for the results. To the best of our knowledge, the results are complete and accurate. In our opinion, the techniques and assumptions used are reasonable, meet the requirements and intent of Part VII, Chapter 112, Florida Statutes, and are based on generally accepted actuarial principles and practices. There is no benefit or expense to be provided by the plan and/or paid from the plan's assets for which liabilities or current costs have not been established or otherwise taken into account in the valuation. All known events or trends which may require a material increase in plan costs or required contribution rates have been taken into account in the valuation.

Gabriel, Roeder, Smith & Company will be pleased to review this valuation report with the Board of Trustees and to answer any questions pertaining to the valuation.

Respectfully submitted,

GABRIEL, ROEDER, SMITH & COMPANY

By 
Peter N. Strong, FSA, FCA, MAAA
Enrolled Actuary No. 26-06975

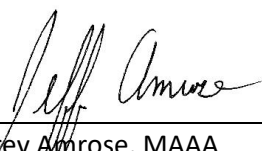
By 
Jeffrey Amrose, MAAA
Enrolled Actuary No. 26-06599



TABLE OF CONTENTS

Section	Title	Page
A	Discussion of Valuation Results	1
	Risks Associated with Measuring the Accrued Liability And Actuarially Determined Employer Contribution	4
	Low Default Risk Obligation Measurement	7
	Chapter Revenue	8
B	Valuation Results	
	1. Participant Data	9
	2. Actuarially Determined Employer Contribution (ADEC)	10
	3. Actuarial Value of Benefits & Assets	11
	4. Calculation of Employer Normal Cost	12
	5. Liquidation of the Unfunded Actuarial Liability	13
	6. 25-Year Projection	15
	7. Actuarial Gains and Losses	17
	8. Actual Compared to Expected Decrements	23
	9. Supplemental Pension Distribution	24
	10. Recent History of Valuation Results	25
	11. Recent History of Required and Actual Contributions	26
	12. Actuarial Assumptions and Cost Method	27
13. Glossary of Terms	33	
C	Pension Fund Information	
	1. Summary of Assets	36
	2. Summary of Fund's Disbursements and Income	37
	3. Calculation of Actuarial Value of Assets	38
	4. Reconciliation of DROP Accounts	39
5. Investment Rate of Return	40	
D	Financial Accounting Information	
	1. FASB No. 35	41
	2. GASB No. 67	42
E	Miscellaneous Information	
	1. Reconciliation of Membership Data	48
	2. Age/Service/Salary Distributions	49
F	Summary of Plan Provisions	51



SECTION A

DISCUSSION OF VALUATION RESULTS

DISCUSSION OF VALUATION RESULTS

Comparison of Required Employer Contributions

A comparison of the required employer contribution developed in this and the last actuarial valuation is shown below. The contribution policy of the City is to contribute the dollar amount determined by multiplying the required percentage of payroll determined as of the valuation date by the projected pensionable payroll for the year.

	For FYE 9/30/27 Based on 10/1/2025 Valuation	For FYE 9/30/26 Based on 10/1/2024 Valuation	Increase (Decrease)
Required Employer/State Contribution As % of Covered Payroll	\$ 10,349,408 60.49 %	\$ 9,577,424 61.29 %	\$ 771,984 (0.80) %
Estimated State Contribution As % of Covered Payroll	\$ 465,087 2.72 %	\$ 465,087 2.98 %	\$ 0 (0.26) %
Required Employer Contribution As % of Covered Payroll	\$ 9,884,321 57.77 %	\$ 9,112,337 58.31 %	\$ 771,984 (0.54) %

The required employer contribution has been computed under the assumption that the amount to be received from the State next year will be at least \$465,087. The City may not take credit for State revenue in excess of \$465,087. If the next payment from the State falls below \$465,087, the City must raise its contribution by the difference.

The employer contribution listed above is for the City's fiscal year ending September 30, 2027 has been calculated assuming the employer contribution is made on October 1, 2026. The actual City contribution for the fiscal year ending September 30, 2025 was \$8,555,476, which equals the the required contribution of \$8,555,476.

Revisions in Benefits

There have been no revisions in plan benefit provisions since the last valuation.

Revisions in Actuarial Assumptions and Methods

In compliance with Florida Statutes Chapter 112.63(1)(f) which mandates the use of the same mortality tables used in either of the two most recently published actuarial valuation reports of the Florida Retirement System (FRS), the mortality tables and improvement scales were changed to reflect the updated mortality assumptions used in the July 1, 2024 FRS Actuarial Valuation.



The change in the mortality assumption caused an increase in the required employer contribution of 2.29% of covered payroll, or \$391,803.

Actuarial Experience

There was a net actuarial experience loss of \$244,441 for the year, which means that overall actual experience was somewhat less favorable than expected. On the asset side, there was an experience gain of \$3,818,916. The net investment return on the actuarial value of assets (reflecting smoothing) was 9.44% versus an assumed return of 6.90%. The net investment return on the market value of assets was 12.48%, but the FY 2022 market value loss (-14.4%) is still being smoothed in.

On the liability side, there was an experience loss of \$4,063,357, which was primarily due to higher salary increases than expected (salaries for continuing active members increased 12.9% on average, versus 5.6% expected). The largest source of experience loss was salary increases that were higher than expected (12.9% average actual salary increases versus 5.6% expected, on average). There were also more retirements than expected (8 actual versus 4 expected), and mortality experience among retirees was lower than the expected mortality (2 deaths with 1 continuing beneficiary were reported to have occurred during the fiscal year, with a decrease in retiree payroll of \$66,730, versus 3.1 expected and an expected decrease in retiree payroll of \$125,607).

The net actuarial loss for the year caused an increase in the annual required employer contribution of 0.11% of covered payroll (or \$18,820).

Funded Ratio

The funded ratio is 66.7% as of October 1, 2025 compared to 65.3% as of October 1, 2024. The funded ratio would have been 68.1% prior to recognizing the mortality assumption change. The funded ratio is equal to the actuarial value of assets divided by the actuarial accrued liability.

Analysis of Change in Employer Contribution

The components of change in the required employer contribution are as follows:

Contribution Rate Last Year	58.31 %
Actuarial Experience	0.11
Change in Administrative Expense	(0.06)
Amortization Payment on UAL	(2.55)
Change in State Contribution	0.26
Change in Normal Cost Rate	(0.59)
Change in Benefits	0.00
Change in Assumptions and Methods	<u>2.29</u>
Contribution Rate This Year	57.77 %

Covered payroll as of October 1, 2025 was \$16,691,987 versus \$15,245,273, an increase of 9.5%. Amortization payments on the unfunded actuarial liability (UAL) are scheduled to increase by 2.5% per year.



When covered payroll increases more than 2.5%, the amortization payment as a percentage of covered payroll will decrease. The 9.5% increase in covered payroll caused the amortization payment on the UAL (expressed as a percentage of pay) to decrease by approximately 2.55% of covered payroll.

The increase in covered payroll also caused the employer normal cost to increase as a dollar amount (since the normal cost tends to remain a relatively constant percentage of covered payroll). The net increase in the employer normal cost due to the increase in covered payroll was approximately \$200,000.

Required Contributions in Later Years

The current calculated City contribution requirement is 57.77% of payroll starting October 1, 2026. It is important to keep in mind that under the asset smoothing method, gains and losses are recognized over five years. As of September 30, 2025, the market value of assets exceeded the actuarial value of assets by \$17,194,059. Once all the gains and losses through September 30, 2025 are fully recognized in the actuarial asset values, the contribution rate is expected to decrease by roughly 7.46% of payroll before any other changes are taken into account, unless there are offsetting experience losses.

Relationship to Market Value

If Market Value had been the basis for the valuation, the City contribution rate would have been 50.31% (\$8,607,968) for the fiscal year ending September 30, 2027, and the funded ratio would have been 75.4%. The funded ratio on a market value basis was 71.4% last year, and it was 57.6% two years ago.

Conclusion

It is important to note that the funded ratio was over 96.5% in the year 2000 but is currently 66.7% (75.4% based on the net market value of assets). Multiple steps have been taken over time to address this issue, including reducing the investment return assumption, shortening the UAL amortization period, applying a portion of the annual insurance premium tax money toward the UAL, and conducting regular experience studies and implementing new assumptions based on actual experience. There have been some headwinds over the last few years, as actuarial experience losses have occurred during the last 7 years in a row, totaling approximately \$21.4 million (over this same period, due to a combination of assumption changes, plan changes and experience losses, the Plan's unfunded liability has increased by approximately \$21.5 million). Despite these recent headwinds, however, the 25-year projection (see page 15) shows that if actual experience matches the actuarial assumptions over the next 11 years, the Plan is projected to become fully funded by October 1, 2036.

The last experience study was conducted in 2020 and examined experience during the 7-year period ending September 30, 2019). We recommend a new experience study be conducted to evaluate experience during the 7-year period ending September 30, 2025.

The remainder of this Report includes detailed actuarial valuation results, financial information, miscellaneous information and statistics, and a summary of plan provisions.



RISKS ASSOCIATED WITH MEASURING THE ACCRUED LIABILITY AND ACTUARIALLY DETERMINED CONTRIBUTION

The determination of the accrued liability and the actuarially determined contribution requires the use of assumptions regarding future economic and demographic experience. Risk measures, as illustrated in this report, are intended to aid in the understanding of the effects of future experience differing from the assumptions used in the course of the actuarial valuation. Risk measures may also help with illustrating the potential volatility in the accrued liability and the actuarially determined contribution that result from the differences between actual experience and the actuarial assumptions.

Future actuarial measurements may differ significantly from the current measurements presented in this report due to such factors as the following: plan experience differing from that anticipated by the economic or demographic assumptions; changes in economic or demographic assumptions due to changing conditions; increases or decreases expected as part of the natural operation of the methodology used for these measurements (such as the end of an amortization period, or additional cost or contribution requirements based on the Plan's funded status); and changes in plan provisions or applicable law. The scope of an actuarial valuation does not include an analysis of the potential range of such future measurements.

Examples of risk that may reasonably be anticipated to significantly affect the plan's future financial condition include:

1. Investment risk – actual investment returns may differ from the expected returns;
2. Contribution risk – actual contributions may differ from expected future contributions. For example, actual contributions may not be made in accordance with the plan's funding policy or material changes may occur in the anticipated number of covered employees, covered payroll, or other relevant contribution base;
3. Salary and Payroll risk – actual salaries and total payroll may differ from expected, resulting in actual future accrued liability and contributions differing from expected;
4. Longevity risk – members may live longer or shorter than expected and receive pensions for a period of time other than assumed;
5. Other demographic risks – members may terminate, retire or become disabled at times or with benefits other than assumed resulting in actual future accrued liability and contributions differing from expected.

The effects of certain trends in experience can generally be anticipated. For example if the investment return since the most recent actuarial valuation is less (or more) than the assumed rate, the cost of the plan can be expected to increase (or decrease). Likewise if longevity is improving (or worsening), increases (or decreases) in cost can be anticipated.

The computed contribution rate shown on page 1 may be considered as a minimum contribution rate that complies with the Board's funding policy. The timely receipt of the actuarially determined contributions is critical to support the financial health of the plan. Users of this report should be aware that contributions made at the actuarially determined rate do not necessarily guarantee benefit security.



Plan Maturity Values

Risks facing a pension plan evolve over time. A young plan with virtually no investments and paying few benefits may experience little investment risk. An older plan with a large number of members in pay status and a significant trust may be much more exposed to investment risk. Generally accepted plan maturity measures include the following:

	<u>2025</u>	<u>2024</u>
Ratio of the market value of assets to total payroll	8.91	8.57
Ratio of actuarial accrued liability to payroll	11.81	12.01
Ratio of actives to retirees and beneficiaries	0.64	0.65
Ratio of net cash flow to market value of assets	1.0%	0.9%

Ratio of Market Value of Assets to Payroll

The relationship between assets and payroll is a useful indicator of the potential volatility of contributions. For example, if the market value of assets is 2.0 times the payroll, a return on assets 5% different than assumed would equal 10% of payroll. A higher (lower) or increasing (decreasing) level of this maturity measure generally indicates a higher (lower) or increasing (decreasing) volatility in plan sponsor contributions as a percentage of payroll.

Ratio of Actuarial Accrued Liability to Payroll

The relationship between actuarial accrued liability and payroll is a useful indicator of the potential volatility of contributions for a fully funded plan. A funding policy that targets a funded ratio of 100% is expected to result in the ratio of assets to payroll and the ratio of liability to payroll converging over time. The ratio of liability to payroll may also be used as a measure of sensitivity of the liability itself. For example, if the actuarial accrued liability is 2.5 times the payroll, a change in liability 2% other than assumed would equal 5% of payroll. A higher (lower) or increasing (decreasing) level of this maturity measure generally indicates a higher (lower) or increasing (decreasing) volatility in liability (and also plan sponsor contributions) as a percentage of payroll.

Ratio of Actives to Retirees and Beneficiaries

A young plan with many active members and few retirees will have a high ratio of active to retirees. A mature open plan may have close to the same number of actives to retirees resulting in a ratio near 1.0. A super-mature or closed plan may have significantly more retirees than actives resulting in a ratio below 1.0.

Ratio of Net Cash Flow to Market Value of Assets

A positive net cash flow means contributions exceed benefits and expenses. A negative cash flow means existing funds are being used to make payments. A certain amount of negative net cash flow is generally expected to occur when benefits are prefunded through a qualified trust. Large negative net cash flows as a percent of assets may indicate a super-mature plan or a need for additional contributions.



Additional Risk Assessment

Additional risk assessment is outside the scope of the annual actuarial valuation. Additional assessment may include scenario tests, sensitivity tests, stochastic modeling, stress tests, and a comparison of the present value of accrued benefits at low-risk discount rates with the actuarial accrued liability.

LOW-DEFAULT-RISK OBLIGATION MEASURE

Actuarial Standards of Practice No. 4 (ASOP No. 4) was revised and reissued in December 2021 by the Actuarial Standards Board (ASB). It includes a calculation called a low-default-risk obligation measure (LDRM) to be prepared and issued annually for defined benefit pension plans. The transmittal memorandum for ASOP No. 4 includes the following explanation:

“The ASB believes that the calculation and disclosure of this measure provides appropriate, useful information for the intended user regarding the funded status of a pension plan. The calculation and disclosure of this additional measure is not intended to suggest that this is the “right” liability measure for a pension plan. However, the ASB does believe that this additional disclosure provides a more complete assessment of a plan’s funded status and provides additional information regarding the security of benefits that members have earned as of the measurement date.”

The following information has been prepared in compliance with this requirement. Unless otherwise noted, the measurement date, actuarial cost methods, and assumptions used are the same as for the funding valuation covered in this actuarial valuation report.

A. Low-default-risk Obligation Measure of benefits earned as of the measurement date: \$250,232,696 (compared to \$197,176,524 using the Plan’s ongoing valuation assumptions, which include an assumed rate of investment return of 6.90%).

B. Discount rate used to calculate the LDRM: 4.90% based on Bond Buyer “20-Bond GO Index” as of September 25, 2025

C. Other significant assumptions that differ from those used for the funding valuation: none

D. Actuarial cost method used to calculate the LDRM: Entry Age Normal

E. Valuation procedures to value any significant plan provisions that are difficult to measure using traditional valuation procedures, and that differ from the procedures used in the funding valuation: none

F. Commentary to help the intended user understand the significance of the LDRM with respect to the funded status of the plan, plan contributions, and the security of participant benefits: The LDRM is a market-based measurement of the pension obligation. It estimates the amount the plan would need to invest in low default risk securities. This measure may not be appropriate for assessing the need for or amount of future contributions. This measure may not be appropriate for assessing the sufficiency of plan assets to cover the estimated cost of settling the plan’s benefit obligation.

The difference between the two measures (Valuation and LDRM) is one illustration of the savings the sponsor anticipates by taking on the risk in a diversified portfolio.



CHAPTER REVENUE

Increments in Chapter revenue over that received in 1998 must first be used to fund the cost of compliance with minimum benefits. Once minimums are met, any subsequent additional Chapter revenue must be used to provide extra benefits. As of the valuation date, all minimum Chapter requirements have been met.

Actuarial Confirmation of the Use of State Chapter Money	
1. Base Amount Previous Plan Year	\$ 465,087
2. Amount Received for Previous Plan Year	1,271,069
3. Benefit Improvements Made in Previous Plan Year	0
4. Excess Funds for Previous Plan Year: (2) - (1) - (3)	805,982
5. Accumulated Excess at Beginning of Previous Year	575,586
6. Excess Funds Used in Previous Plan Year*	741,720
7. Accumulated Excess as of Valuation Date (Available for Benefit Improvements)	639,848
8. Base Amount This Plan Year	465,087

**Includes \$50,000 of excess state premium tax revenue used by the City to reduce the unfunded actuarial accrued liability in November 2024.*

SECTION B

VALUATION RESULTS

PARTICIPANT DATA		
	October 1, 2025	October 1, 2024
ACTIVE MEMBERS		
Number	127	123
Covered Annual Payroll	\$ 16,691,987	\$ 15,245,273
Average Annual Payroll	\$ 131,433	\$ 123,945
Average Age	36.1	36.5
Average Past Service	7.6	8.3
Average Age at Hire	28.5	28.2
RETIRES & BENEFICIARIES & DROP		
Number	187	176
Annual Benefits	\$ 11,059,261	\$ 10,181,107
Average Annual Benefit	\$ 59,140	\$ 57,847
Average Age	60.8	60.9
DISABILITY RETIREES		
Number	13	13
Annual Benefits	\$ 335,257	\$ 335,257
Average Annual Benefit	\$ 25,789	\$ 25,789
Average Age	69.6	68.6
TERMINATED VESTED MEMBERS		
Number	15	18
Annual Benefits	\$ 371,463	\$ 419,549
Average Annual Benefit	\$ 24,764	\$ 23,308
Average Age	44.4	44.3



ACTUARIALLY DETERMINED EMPLOYER CONTRIBUTION (ADEC)

A. Valuation Date	October 1, 2025 <i>After Assumption Changes</i>	October 1, 2025 <i>Before Assumption Changes</i>	October 1, 2024
B. ADEC to Be Paid During Fiscal Year Ending	9/30/2027	9/30/2027	9/30/2026
C. Assumed Date of Employer Contribution	10/1/2026	10/1/2026	10/1/2025
D. Annual Payment to Amortize Unfunded Actuarial Liability	\$ 6,632,567	\$ 6,332,232	\$ 6,156,176
E. Employer Normal Cost	3,464,194	3,382,658	3,187,035
F. ADEC if Paid on the Valuation Date: D+E	10,096,761	9,714,890	9,343,211
G. ADEC Adjusted for Frequency of Payments	10,096,761	9,714,890	9,343,211
H. ADEC as % of Covered Payroll	60.49 %	58.20 %	61.29 %
I. Assumed Rate of Increase in Covered Payroll to Contribution Year	2.50 %	2.50 %	2.50 %
J. Covered Payroll for Contribution Year	17,109,287	17,109,287	15,626,405
K. ADEC for Contribution Year: H x J	10,349,408	9,957,605	9,577,424
L. Estimate of State Revenue in Contribution Year	465,087	465,087	465,087
M. Actuarially Determined Employer Contribution (ADEC) in Contribution Year	9,884,321	9,492,518	9,112,337
N. ADEC as % of Covered Payroll in Contribution Year: M ÷ J	57.77 %	55.48 %	58.31 %



ACTUARIAL VALUE OF BENEFITS AND ASSETS

A. Valuation Date	October 1, 2025 <i>After Assumption Changes</i>	October 1, 2025 <i>Before Assumption Changes</i>	October 1, 2024
B. Actuarial Present Value of All Projected Benefits for			
1. Active Members			
a. Service Retirement Benefits	\$ 79,517,381	\$ 77,788,159	\$ 75,320,511
b. Vesting Benefits	6,199,875	6,059,584	5,573,957
c. Disability Benefits	2,563,808	2,513,011	2,168,467
d. Preretirement Death Benefits	555,674	686,007	613,800
e. Return of Member Contributions	672,256	672,682	524,690
f. Total	89,508,994	87,719,443	84,201,425
2. Inactive Members			
a. Service Retirees & Beneficiaries	135,251,940	132,387,255	121,609,282
b. Disability Retirees	2,975,411	2,891,434	2,950,940
c. Terminated Vested Members	4,487,986	4,395,282	4,754,496
d. Total	142,715,337	139,673,971	129,314,718
3. Total for All Members	232,224,331	227,393,414	213,516,143
C. Actuarial Accrued (Past Service) Liability	197,176,524	193,027,885	183,054,811
D. Actuarial Value of Accumulated Plan Benefits per FASB No. 35	181,942,205	178,182,187	169,147,588
E. Plan Assets			
1. Market Value	148,675,343	148,675,343	130,700,140
2. Actuarial Value	131,481,284	131,481,284	119,589,582
F. Unfunded Actuarial Accrued Liability: C - E2	65,695,240	61,546,601	63,465,229
G. Actuarial Present Value of Projected Covered Payroll	136,801,599	136,658,568	118,952,131
H. Actuarial Present Value of Projected Member Contributions	11,628,136	11,615,978	10,110,931
I. Accumulated Contributions of Active Members	7,032,514	7,032,514	6,841,442



**ENTRY AGE NORMAL METHOD
CALCULATION OF EMPLOYER NORMAL COST**

A. Valuation Date	October 1, 2025 <i>After Assumption Changes</i>	October 1, 2025 <i>Before Assumption Changes</i>	October 1, 2024
B. Normal Cost for			
1. Service Retirement Benefits	\$ 3,513,320	\$ 3,436,783	\$ 3,207,711
2. Vesting Benefits	537,919	526,383	515,208
3. Disability Benefits	247,950	242,771	215,002
4. Preretirement Death Benefits	45,731	57,257	52,022
5. Return of Member Contributions	<u>101,703</u>	<u>101,893</u>	<u>86,464</u>
6. Total for Future Benefits	4,446,623	4,365,087	4,076,407
7. Assumed Amount for Administrative Expenses	<u>186,010</u>	<u>186,010</u>	<u>177,797</u>
8. Total Normal Cost	4,632,633	4,551,097	4,254,204
C. Expected Member Contribution	1,168,439	1,168,439	1,067,169
D. Employer Normal Cost: B8-C	3,464,194	3,382,658	3,187,035
E. Employer Normal Cost as a % of Covered Payroll	20.75%	20.27%	20.91%

LIQUIDATION OF THE UNFUNDED ACTUARIAL ACCRUED LIABILITY

UAAL Amortization Period and Payments						
Original UAAL				Current UAAL		
Date Established	Type of Amortization Base	Amortization Period (Years)	Amount	Years Remaining	Amount	Payment
10/1/98	Fresh Start	30	\$ 1,331,353	3	\$ 554,075	\$ 192,507
10/1/99	Plan Amendment	30	1,656,722	4	860,532	228,880
10/1/00	Plan Amendment	30	185,619	5	112,350	24,397
10/1/01	Plan Amendment	30	46,601	6	32,094	5,926
10/1/04	Plan Amendment	30	1,166,935	9	1,038,076	135,659
10/1/05	Plan Amendment	30	2,985,574	10	2,803,703	336,290
10/1/05	Method/Assum Change	30	13,646,165	10	12,814,881	1,537,081
10/1/06	Experience Loss	30	2,307,394	11	2,266,383	251,988
10/1/07	Experience Loss	30	16,404	12	16,667	1,732
10/1/08	Experience Loss	30	3,582,504	13	3,720,118	363,730
10/1/09	Experience Loss	30	3,419,100	13	3,524,206	344,575
10/1/10	Experience Loss	30	1,404,570	13	1,433,967	140,204
10/1/11	Experience Loss	30	4,476,765	13	4,503,288	440,304
10/1/11	Assumption Change	30	1,634,520	13	1,644,203	160,760
10/1/12	Experience Gain	30	(2,249,576)	13	(2,209,862)	(216,067)
10/1/12	Assumption Change	30	412,194	13	404,916	39,590
10/1/12	Plan Amendment	30	(426,604)	13	(419,072)	(40,974)
10/1/13	Experience Gain	30	(794,394)	13	(771,623)	(75,445)
10/1/13	Assumption Change	30	430,545	13	418,206	40,890
10/1/14	Experience Gain	30	(2,463,259)	13	(2,354,875)	(230,245)
10/1/14	Assumption Change	30	461,268	13	440,972	43,116
10/1/15	Experience Loss	30	1,896,466	13	1,786,110	174,635
10/1/15	Assumption Change	30	(588,861)	13	(554,597)	(54,225)
10/1/16	Experience Gain	30	(2,092,313)	13	(1,924,694)	(188,185)
10/1/16	Assumption Change	30	3,097,709	13	2,849,546	278,611
10/1/17	Experience Loss	30	542,252	13	492,163	48,121
10/1/17	Plan Amendment	30	(1,174)	13	(1,065)	(104)
10/1/17	Assumption Change	30	3,429,073	13	3,112,313	304,303
10/1/18	Experience Gain	20	(183,111)	13	(163,878)	(16,023)
10/1/19	Experience Loss	20	1,147,748	14	1,060,333	98,118
10/1/19	Plan Amendment	20	13,311	14	12,298	1,138
10/1/20	Experience Loss	20	3,443,838	15	3,259,921	286,917
10/1/20	Plan Amendment	20	2,462,674	15	2,331,155	205,173
10/1/21	Experience Loss	20	1,207,414	16	1,158,152	97,371
10/1/21	Assumption Change	20	2,039,450	16	1,956,241	164,469
10/1/22	Experience Loss	20	7,695,836	17	7,501,578	604,737
10/1/23	Experience Loss	20	6,048,404	18	5,951,372	461,557
10/1/23	Plan Amendment	20	56,629	18	55,720	4,321
10/1/24	Experience Loss	20	1,598,971	19	1,586,287	118,704
10/1/25	Experience Loss	20	244,441	20	244,441	17,696
10/1/25	Assumption Change	20	4,148,639	20	4,148,639	300,335
			\$ 69,437,796		\$ 65,695,240	\$ 6,632,567



AMORTIZATION SCHEDULE

The UAAL is being amortized as a level percent of payroll over the number of years remaining in the amortization period. The expected amortization schedule is as follows:

Amortization Schedule	
Year	Expected UAAL
2025	\$ 65,695,240
2026	63,137,998
2027	60,227,050
2028	56,933,561
2029	53,448,205
2030	49,807,087
2035	24,747,133
2040	6,804,319
2045	-

City of Boynton Beach Municipal Police Officers' Retirement Fund
25-Year Projection of Required City Contributions

Fiscal Year Ending	Valuation Date	Covered Payroll for Contribution Year	Required City Contribution		Projected UAAL on Valuation Date	Funded Ratio on Valuation Date
			\$ Amount	% of Pay		
2027	10/1/2025	17,315,359	9,884,321	57.08%	65,695,240	67%
2028	10/1/2026	17,505,275	10,047,197	57.40%	61,708,885	70%
2029	10/1/2027	17,985,826	9,552,438	53.11%	50,715,420	76%
2030	10/1/2028	18,341,042	8,890,915	48.48%	39,124,852	82%
2031	10/1/2029	18,624,400	8,389,510	45.05%	31,905,312	86%
2032	10/1/2030	19,019,158	8,222,777	43.23%	26,873,096	88%
2033	10/1/2031	19,438,995	8,159,340	41.97%	22,270,006	90%
2034	10/1/2032	19,879,822	8,122,575	40.86%	17,748,624	93%
2035	10/1/2033	20,565,579	8,048,347	39.14%	13,198,892	95%
2036	10/1/2034	20,991,084	7,768,651	37.01%	8,445,389	97%
2037	10/1/2035	21,271,870	5,589,476	26.28%	3,587,936	99%
2038	10/1/2036	21,429,719	3,507,541	16.37%	(1,264,793)	100%
2039	10/1/2037	21,724,498	3,519,448	16.20%	(4,099,824)	102%
2040	10/1/2038	22,123,973	3,560,897	16.10%	(4,887,707)	102%
2041	10/1/2039	22,768,041	3,634,928	15.97%	(5,340,821)	102%
2042	10/1/2040	23,507,164	3,751,953	15.96%	(5,798,766)	102%
2043	10/1/2041	24,031,845	3,884,032	16.16%	(6,259,068)	102%
2044	10/1/2042	24,625,155	3,978,641	16.16%	(6,771,794)	102%
2045	10/1/2043	25,130,414	4,080,778	16.24%	(7,373,150)	102%
2046	10/1/2044	25,281,624	4,176,626	16.52%	(8,005,650)	103%
2047	10/1/2045	26,040,968	4,207,147	16.16%	(8,672,285)	103%
2048	10/1/2046	26,651,722	4,342,141	16.29%	(9,433,648)	103%
2049	10/1/2047	27,265,465	4,454,888	16.34%	(10,148,459)	103%
2050	10/1/2048	27,882,480	4,522,504	16.22%	(10,959,146)	103%
2051	10/1/2049	28,534,218	4,684,946	16.42%	(11,858,784)	103%
2052	10/1/2050	29,276,809	4,805,326	16.41%	(12,865,248)	104%

Total: 153,787,343

Total Present Value: 88,257,394

Assumptions

Mortality Assumption: FRS Mortality for Special Risk Class Members (from 7/1/2024 FRS valuation)

Payroll Growth Assumption in Amortization of Unfunded Actuarial Accrued Liability: 2.50%

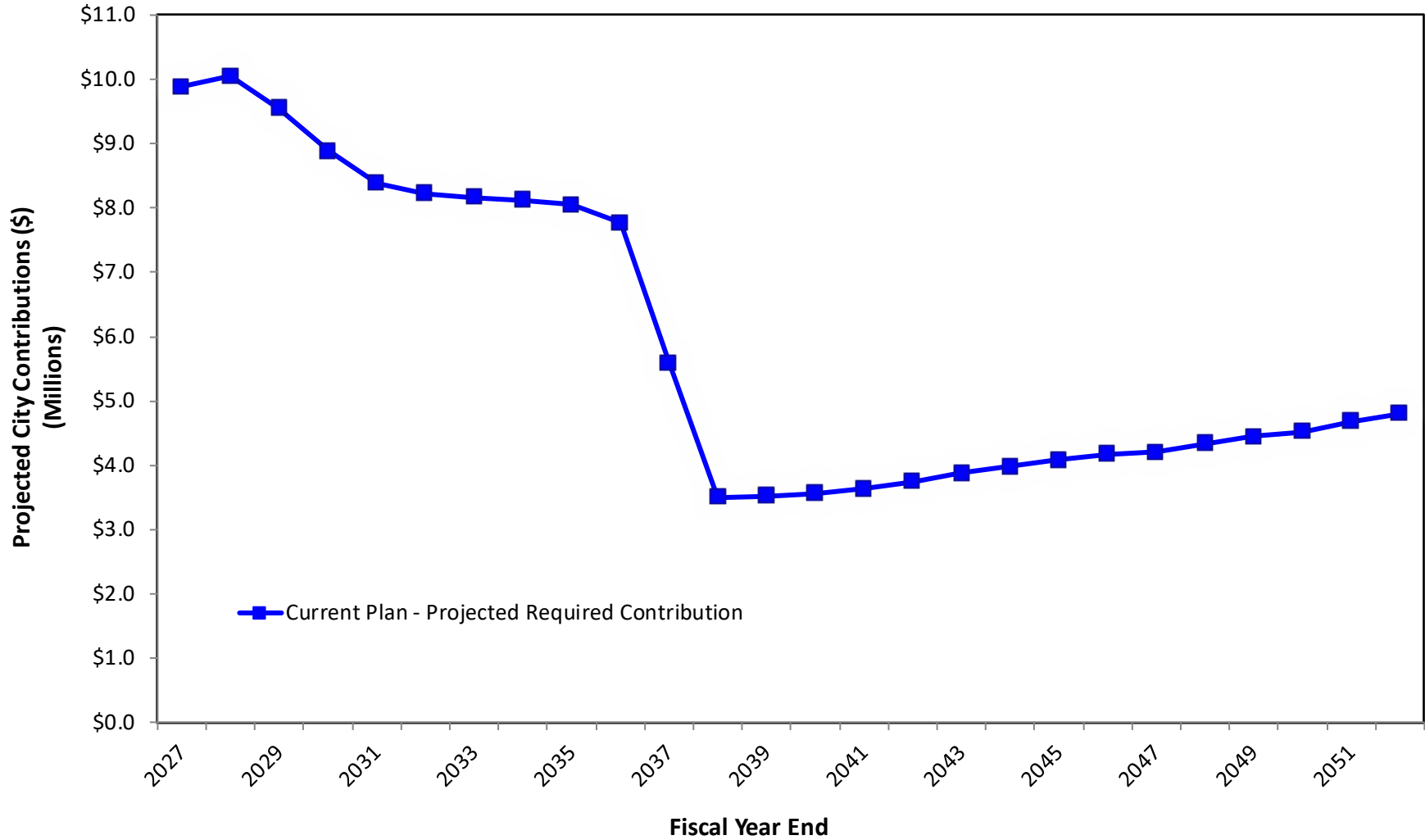
Investment Return Assumption and Actual Return on Plan Assets: 6.90%

Administrative Expenses and Total Annual Chapter 185 State Money: Projected to increase 2.5% per year

No future actuarial experience gains or losses are assumed.



City of Boynton Beach Municipal Police Officers's Retirement Fund 25-Year Projection of City Contribution Requirement



ACTUARIAL GAINS AND LOSSES

The assumptions used to anticipate mortality, employment turnover, investment income, expenses, salary increases, and other factors have been based on long range trends and expectations. Actual experience can vary from these expectations. The variance is measured by the gain and loss for the period involved. If significant long term experience reveals consistent deviation from what has been expected and that deviation is expected to continue, the assumptions should be modified. The net actuarial gain (loss) for the past year is computed as follows:

A. Derivation of the Current UAAL	
1. Last Year's UAAL	\$ 63,465,229
2. Last Year's Employer Normal Cost	3,187,035
3. Last Year's Contributions*	9,342,499
4. Interest at the Assumed Rate on:	
a. 1 and 2 for one year	4,599,006
b. 3 from dates paid	<u>606,611</u>
c. a - b	3,992,395
5. This Year's Expected UAAL: 1 + 2 - 3 + 4c	61,302,160
6. This Year's Actual UAAL (Before any changes in benefits and assumptions)	61,546,601
7. Net Actuarial Gain (Loss): (5) - (6)	(244,441)
8. Gain (Loss) due to investments	3,818,916
9. Gain (Loss) due to other sources	(4,063,357)

**Includes 1.5% in employee contributions, 3% in DROP participant contributions, and \$50,000 in excess state premium tax revenue used to reduce the UAAL.*

Net actuarial gains in previous years are detailed in the table on the next page.

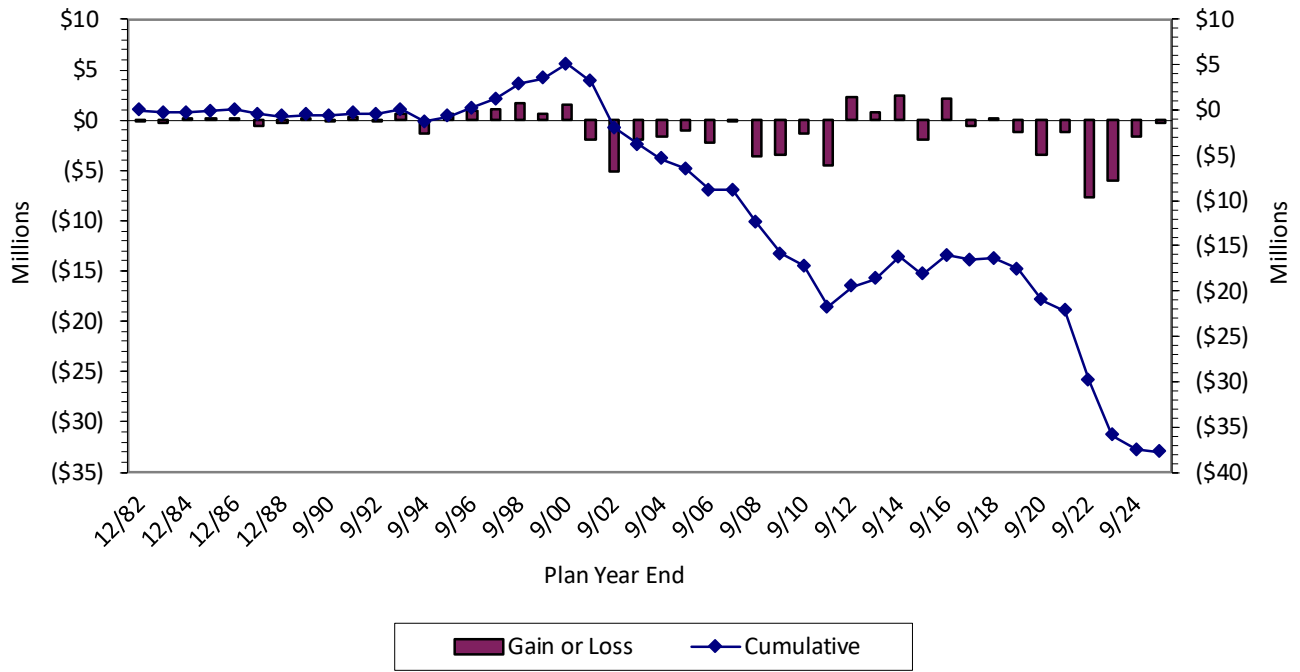
HISTORY OF NET ACTUARIAL GAINS AND LOSSES

Year Ended	Change in Employer Cost Rate *	Gain (Loss)
12/31/82	0.46 %	\$ (56,551)
12/31/83	1.92	(265,213)
12/31/84	(0.04)	6,977
12/31/85	(0.85)	185,443
12/31/86	(0.59)	158,678
12/31/87	1.67	(516,444)
12/31/88	0.74	(254,892)
12/31/89	(0.52)	206,590
9/30/90	0.24	(94,609)
9/30/91	(0.74)	286,744
9/30/92	0.35	(142,237)
9/30/93	(1.34)	564,365
9/30/94	2.57	(1,370,604)
9/30/95	(1.01)	574,379
9/30/96	(1.56)	938,153
9/30/97	(1.60)	1,008,362
9/30/98	(2.85)	1,694,077
9/30/99	(0.88)	568,386
9/30/00	(3.16)	1,596,887
9/30/01	3.92	(1,978,307)
9/30/02	9.58	(5,069,210)
9/30/03	3.22	(1,870,014)
9/30/04	2.75	(1,615,637)
9/30/05	1.85	(1,083,369)
9/30/06	1.46	(2,307,394)
9/30/07	0.02	(16,404)
9/30/08	1.84	(3,582,504)
9/30/09	1.54	(3,419,100)
9/30/10	0.66	(1,404,570)
9/30/11	1.98	(4,476,765)
9/30/12	(1.01)	2,249,576
9/30/13	(0.38)	794,394
9/30/14	(1.18)	2,463,259
9/30/15	0.86	(1,896,466)
9/30/16	(1.28)	2,092,313
9/30/17	0.31	(542,252)
9/30/18	(0.12)	183,111
9/30/19	0.76	(1,147,748)
9/30/20	2.02	(3,443,838)
9/30/21	0.69	(1,207,414)
9/30/22	4.26	(7,695,836)
9/30/23	3.22	(6,048,404)
9/30/24	0.76	(1,598,971)
9/30/25	0.11	(244,441)

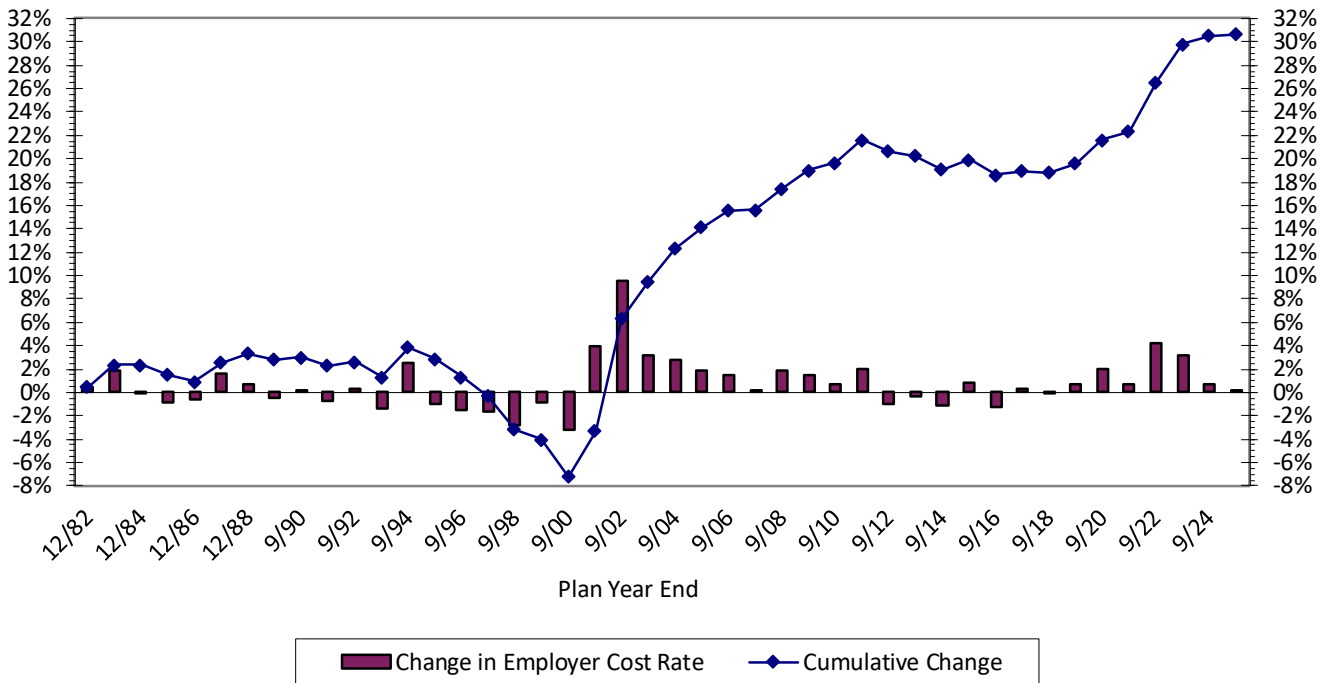
* Before 9/30/06, change in Employer Normal Cost.



Actuarial Gain (+) or Loss (-)



Change in Employer Cost Rate



The fund earnings and salary increase assumptions have considerable impact on the cost of the Plan so it is important that they are in line with the actual experience. The following table shows the actual fund earnings and salary increase rates compared to the assumed rates for the last few years:

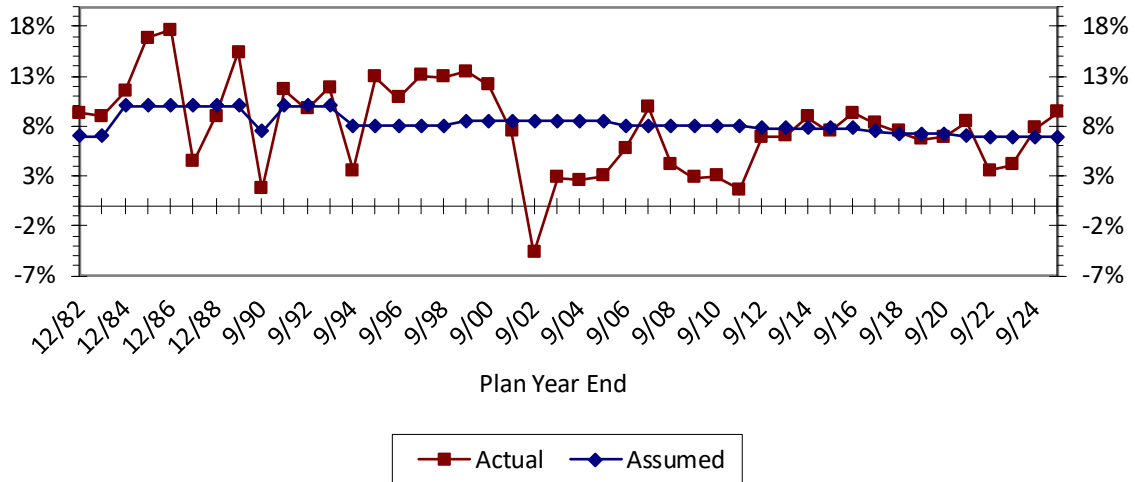
HISTORY OF INVESTMENT EARNINGS AND SALARY INCREASES

Year Ending	Investment Return		Salary Increases	
	Actual	Assumed	Actual	Assumed
12/31/1982	9.3	7.00	14.6	7.0
12/31/1983	9.0	7.00	14.8	7.0
12/31/1984	11.5	10.00	6.8	10.0
12/31/1985	16.8	10.00	18.6	10.0
12/31/1986	17.6	10.00	16.3	10.0
12/31/1987	4.4	10.00	15.3	10.0
12/31/1988	9.0	10.00	6.7	10.0
12/31/1989	15.4	10.00	12.4	10.0
9/30/1990 (9 mos.)	1.7	7.50	6.1	10.0
9/30/1991	11.6	10.00	2.5	10.0
9/30/1992	9.7	10.00	5.4	10.0
9/30/1993	11.9	10.00	3.1	10.0
9/30/1994	3.5	8.00	7.0	6.3
9/30/1995	12.9	8.00	8.5	5.8
9/30/1996	10.8	8.00	4.9	6.3
9/30/1997	13.1	8.00	8.7	6.3
9/30/1998	12.9	8.00	4.6	6.3
9/30/1999	13.5	8.50	10.9	6.1
9/30/2000	12.1	8.50	3.4	6.3
9/30/2001	7.5	8.50	6.0	5.9
9/30/2002	(4.7)	8.50	17.2	5.9
9/30/2003	2.8	8.50	9.5	5.9
9/30/2004	2.6	8.50	11.5	6.0
9/30/2005	3.0	8.50	9.6	6.0
9/30/2006	5.7	8.00	14.4	6.0
9/30/2007	9.9	8.00	5.7	6.1
9/30/2008	4.2	8.00	13.1	6.1
9/30/2009	2.8	8.00	9.3	6.1
9/30/2010	3.0	8.00	0.2	6.1
9/30/2011	1.6	8.00	7.3	5.8
9/30/2012	6.9	7.75	(3.1)	5.9
9/30/2013	7.0	7.75	0.1	5.8
9/30/2014	8.9	7.75	1.0	5.8
9/30/2015	7.5	7.75	8.6	5.8
9/30/2016	9.3	7.75	1.5	5.7
9/30/2017	8.3	7.50	10.4	5.7
9/30/2018	7.5	7.25	5.0	5.8
9/30/2019	6.7	7.25	5.4	5.7
9/30/2020	6.9	7.25	16.9	5.8
9/30/2021	8.4	7.00	8.7	5.8
9/30/2022	3.5	6.90	12.1	5.4
9/30/2023	4.1	6.90	10.2	5.5
9/30/2024	7.8	6.90	11.3	5.5
9/30/2025	9.4	6.90	12.9	5.6
Averages	7.8 %	---	8.5 %	---

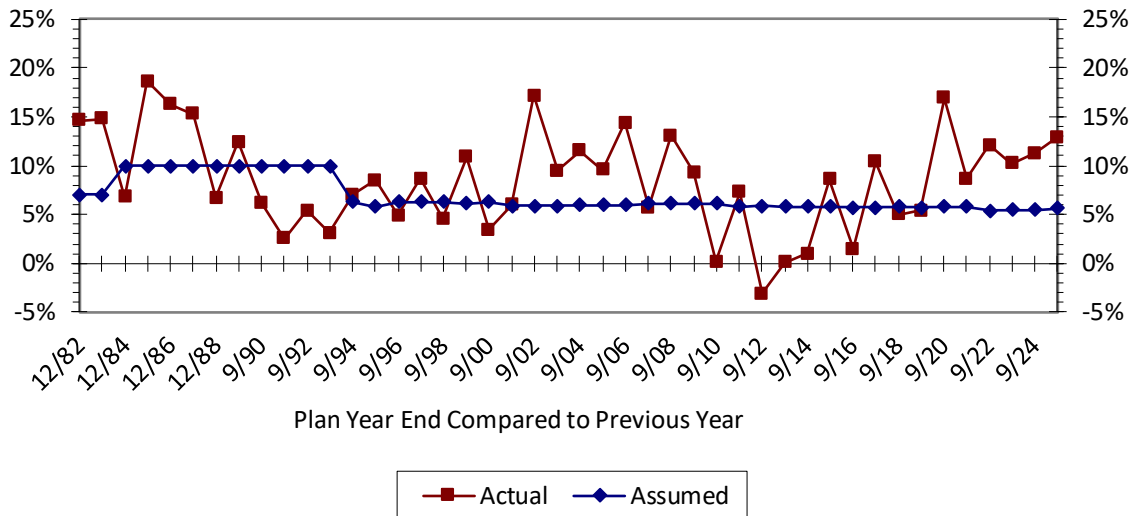
The actual investment return rates shown above are based on the actuarial value of assets. The actual salary increase rates shown above are the increases received by those active members who were included in the actuarial valuations both at the beginning and the end of each year.



History of Investment Return Based on Actuarial Value of Assets



History of Salary Increases



**Actual (A) Compared to Expected (E) Decrements
Among Active Employees**

Year Ended	Number Added During Year		Service & DROP Retirement		Disability Retirement		Death		Terminations				Active Members End of Year
	A	E	A	E	A	E	A	E	Vested	Other	Totals		
									A	A	A	E	
9/30/2002	14	17	1	1	0	0	0	0	1	15	16	8	119
9/30/2003	14	9	6	4	0	0	0	0	1	2	3	9	124
9/30/2004	8	23	14	0	0	0	0	0	2	7	9	9	109
9/30/2005	21	14	1	1	0	0	0	0	3	10	13	8	116
9/30/2006	25	10	3	2	0	0	0	0	1	6	7	9	131
9/30/2007	17	4	3	3	0	0	0	0	0	1	1	11	144
9/30/2008	14	9	2	1	0	0	0	0	0	7	7	12	149
9/30/2009	8	6	3	7	0	0	0	0	0	3	3	11	151
9/30/2010	5	8	4	2	0	0	0	0	1	3	4	11	148
9/30/2011	5	9	5	4	0	0	0	0	2	2	4	10	144
9/30/2012	9	7	3	1	0	0	0	0	2	2	4	4	146
9/30/2013	5	10	3	1	0	0	0	0	4	3	7	7	141
9/30/2014	5	7	2	1	0	0	0	0	2	3	5	6	139
9/30/2015	9	11	3	2	1	0	0	0	4	3	7	4	137
9/30/2016	17	21	7	1	0	0	0	0	11	3	14	4	133
9/30/2017	15	12	7	3	1	0	1	0	1	2	3	5	136
9/30/2018	13	20	10	4	0	0	0	0	5	5	10	5	129
9/30/2019	5	9	4	1	0	0	0	0	0	5	5	5	125
9/30/2020	2	6	4	4	0	0	0	0	1	1	2	4	121
9/30/2021	5	11	8	7	0	0	0	0	2	1	3	4	115
9/30/2022	13	15	10	5	0	0	0	0	1	4	5	4	113
9/30/2023	16	14	7	4	0	0	1	0	2	4	6	5	115
9/30/2024	22	14	5	2	0	0	0	0	3	6	9	6	123
9/30/2025	17	13	8	4	0	0	0	0	1	4	5	7	127
9/30/2026				2		0		0				7	
24 Yr Totals *	284	279	123	65	2	0	2	0	50	102	152	168	

* Totals are through current Plan Year only.



SUPPLEMENTAL PENSION DISTRIBUTION

	Balance at Beginning of Year	Gain (Loss) for Year	Supplemental Payment	Balance at End of Year
2000	\$ 0	\$ 1,596,887	\$ 0	\$ 1,596,887
2001	1,596,887	(1,978,307)	0	(381,420)
2002	(381,420)	(5,069,210)	0	(5,450,630)
2003	(5,450,630)	(1,870,014)	0	(7,320,644)
2004	(7,320,644)	(1,615,637)	0	(8,936,281)
2005	(8,936,281)	(1,083,369)	0	(10,019,650)
2006	(10,019,650)	(2,307,394)	0	(12,327,044)
2007	(12,327,044)	(16,404)	0	(12,343,448)
2008	(12,343,448)	(3,582,504)	0	(15,925,952)
2009	(15,925,952)	(3,419,100)	0	(19,345,052)
2010	(19,345,052)	(1,404,570)	0	(20,749,622)
2011	(20,749,622)	(4,476,765)	0	(25,226,387)
2012	(25,226,387)	2,249,576	0	(22,976,811)
2013	(22,976,811)	794,394	0	(22,182,417)
2014	(22,182,417)	2,463,259	0	(19,719,158)
2015	(19,719,158)	(1,896,466)	0	(21,615,625)
2016	(21,615,625)	2,092,313	0	(19,523,311)
2017	(19,523,311)	(542,252)	0	(20,065,563)
2018	(20,065,563)	183,111	0	(19,882,452)
2019	(19,882,452)	(1,147,748)	0	(21,030,200)
2020	(21,030,200)	(3,443,838)	0	(24,474,038)
2021	(24,474,038)	(1,207,414)	0	(25,681,452)
2022	(25,681,452)	(7,695,836)	0	(33,377,288)
2023	(33,377,288)	(6,048,404)	0	(39,425,692)
2024	(39,425,692)	(1,598,971)	0	(41,024,663)
2025	(41,024,663)	(244,441)	0	(41,269,104)

Under certain conditions, participants in payment status can receive a supplemental distribution per Section 18-177 of the Plan. The cumulative actuarial gain for plan years beginning after 9/30/1999 must be a positive amount for a supplemental payment to occur.

RECENT HISTORY OF VALUATION RESULTS

Valuation Date	Number of		Covered Annual Payroll	Actuarial Value of Assets	Actuarial Accrued Liability	UFAAL	Funded Ratio	Employer Normal Cost	
	Active Members	Inactive Members						Amount	% of Payroll
10/1/00	124	56	\$ 6,907,740	\$ 32,559,614	\$ 33,726,879	\$ 1,167,265	96.5 %	\$ 464,164	6.72 %
10/1/01	122	75	6,555,316	34,331,760	37,715,963	3,384,203	91.0	726,204	11.08
10/1/02	119	75	7,382,088	32,133,373	40,604,148	8,470,775	79.1	1,538,895	20.85
10/1/03	124	81	7,917,021	33,206,438	44,029,168	10,822,730	75.4	1,935,704	24.45
10/1/04	109	94	7,207,008	34,495,794	48,154,162	13,658,368	71.6	2,043,434	28.35
10/1/05	116	96	7,836,390	35,445,474	56,691,347	21,245,873	62.5	1,238,339	15.80
10/1/06	131	100	9,302,405	37,691,909	61,468,267	23,776,358	61.3	1,441,317	15.49
10/1/07	144	103	10,296,812	41,981,125	66,068,756	24,087,631	63.5	1,587,552	15.42
10/1/08	149	104	11,532,888	44,277,726	72,349,643	28,071,917	61.2	1,774,031	15.38
10/1/09	151	107	12,537,968	46,116,985	78,055,403	31,938,418	59.1	1,931,395	15.40
10/1/10	148	109	12,134,525	48,129,593	81,957,204	33,827,611	58.7	1,895,893	15.62
10/1/11	144	113	12,397,266	49,115,728	89,656,412	40,540,684	54.8	2,126,920	17.16
10/1/12	146	116	11,789,237	52,594,653	91,924,429	39,329,776	57.2	2,114,509	17.94
10/1/13	141	122	11,302,523	56,693,338	95,951,447	39,258,109	59.1	2,132,984	18.87
10/1/14	139	123	11,142,832	62,320,013	99,965,363	37,645,350	62.3	2,214,983	19.88
10/1/15	137	130	11,774,623	67,380,705	106,464,806	39,084,101	63.3	2,425,913	20.60
10/1/16	133	147	11,075,682	73,166,635	113,697,993	40,531,358	64.4	2,415,066	21.81
10/1/17	136	154	11,831,766	79,329,597	123,846,951	44,517,354	64.1	2,707,417	22.88
10/1/18	129	167	11,169,188	85,593,282	129,814,370	44,221,088	65.9	2,522,537	22.58
10/1/19	125	170	11,224,143	91,483,689	136,045,300	44,561,611	67.2	2,538,904	22.62
10/1/20	121	171	12,665,666	97,629,937	147,247,813	49,617,876	66.3	2,747,186	21.69
10/1/21	115	181	12,717,839	105,675,722	157,898,327	52,222,605	66.9	2,828,989	22.24
10/1/22	113	191	13,082,829	108,743,272	167,421,363	58,678,091	65.0	2,862,675	21.88
10/1/23	115	201	13,587,384	111,380,384	174,909,837	63,529,453	63.7	2,931,358	21.57
10/1/24	123	207	15,245,273	119,589,582	183,054,811	63,465,229	65.3	3,187,035	20.91
10/1/25	127	215	16,691,987	131,481,284	197,176,524	65,695,240	66.7	3,464,194	20.75



RECENT HISTORY OF REQUIRED AND ACTUAL CONTRIBUTIONS

Valuation Date	End of Year To Which Valuation Applies	Required Contributions						Actual Contributions		
		Employer & State		Estimated State		Net Employer		Employer	State	Total
		Amount	% of Payroll	Amount	% of Payroll	Amount	% of Payroll			
10/1/98	9/30/99	863,996	13.88	427,874	6.87	436,122	7.01	426,129	427,874	854,003
10/1/99	9/30/00	920,372	12.92	427,874	6.00	492,498	6.92	490,425	429,945	920,370
10/1/00	9/30/01	742,646	10.75	429,945	6.22	312,701	4.53	312,701	430,572	743,273
10/1/01	9/30/02	1,053,863	16.08	443,454	6.77	610,409	9.31	610,409	443,454	1,053,863
10/1/02	9/30/03	1,929,458	26.14	443,454	6.01	1,486,004	20.13	1,486,004	465,087	1,951,091
10/1/03	9/30/04	2,343,601	29.60	465,087	5.87	1,878,514	23.73	1,878,514	465,087	2,343,601
10/1/04	9/30/05	2,571,109	35.67	465,087	6.45	2,106,022	29.22	2,106,022	465,087	2,571,109
10/1/05	9/30/06	2,808,957	35.85	465,087	5.93	2,343,870	29.92	2,343,870	465,087	2,808,957
10/1/06	9/30/07	3,030,547	32.58	465,087	5.00	2,565,460	27.58	2,685,841	465,087	3,150,928
10/1/07	9/30/08	3,236,241	31.43	465,087	4.52	2,771,154	26.91	2,771,154	465,087	3,236,241
10/1/08	9/30/09	3,710,169	32.17	465,087	4.03	3,245,082	28.14	3,245,082	465,087	3,710,169
10/1/09	9/30/10	4,153,603	33.13	465,087	3.71	3,688,516	29.42	3,688,516	465,087	4,153,603
10/1/09	9/30/11	3,997,173	31.78	465,087	3.70	3,532,086	28.08	3,552,348	465,087	4,017,435
10/1/10	9/30/12	4,098,955	32.55	465,087	3.69	3,633,868	28.86	3,633,868	465,087	4,098,955
10/1/11	9/30/13	4,701,572	36.68	465,087	3.63	4,236,485	33.05	4,236,485	465,087	4,701,572
10/1/12	9/30/14	4,560,918	38.54	465,087	3.93	4,095,831	34.61	4,159,736	465,087	4,624,823
10/1/13	9/30/15	4,830,346	41.73	465,087	4.02	4,365,259	37.71	4,365,259	465,087	4,830,346
10/1/14	9/30/16	4,856,392	42.26	465,087	4.05	4,391,305	38.21	4,391,305	465,087	4,856,392
10/1/15	9/30/17	5,256,615	43.16	465,087	3.82	4,791,528	39.34	4,791,528	465,087	5,256,615
10/1/16	9/30/18	5,820,145	51.64	465,087	4.13	5,355,058	47.51	5,355,058	465,087	5,820,145
10/1/17	9/30/19	6,272,374	51.72	465,087	3.83	5,807,287	47.89	5,809,713	465,087	6,274,800
10/1/18	9/30/20	6,280,602	54.86	465,087	4.06	5,815,515	50.80	5,815,515	465,087	6,280,602
10/1/19	9/30/21	6,464,517	56.19	465,087	4.04	5,999,430	52.15	5,999,430	465,087	6,464,517
10/1/20	9/30/22	7,154,550	55.11	465,087	3.58	6,689,463	51.53	6,689,463	465,087	7,154,550
10/1/21	9/30/23	7,601,166	58.31	465,087	3.57	7,136,079	54.74	7,136,079	465,087	7,601,166
10/1/22	9/30/24	8,328,889	62.11	465,087	3.47	7,863,802	58.64	7,863,802	465,087	8,328,889
10/1/23	9/30/25	9,020,563	64.77	465,087	3.34	8,555,476	61.43	8,555,476	465,087	9,020,563
10/1/24	9/30/26	9,577,424	61.29	465,087	2.98	9,112,337	58.31	na	na	na
10/1/25	9/30/27	10,349,408	60.49	465,087	2.72	9,884,321	57.77	na	na	na



ACTUARIAL ASSUMPTIONS AND COST METHOD

VALUATION METHODS

Actuarial Cost Method - Normal cost and the allocation of benefit values between service rendered before and after the valuation date were determined using an **Individual Entry-Age Actuarial Cost Method** having the following characteristics:

- (i) the annual normal cost for each individual active member, payable from the date of employment to the date of retirement, is sufficient to accumulate the value of the member's benefit at the time of retirement;
- (ii) each annual normal cost is a constant percentage of the member's year by year projected covered pay.

Actuarial gains/(losses), as they occur, reduce (increase) the Unfunded Actuarial Accrued Liability.

Financing of Unfunded Actuarial Accrued Liabilities - Unfunded Actuarial Accrued Liabilities (full funding credit if assets exceed liabilities) were amortized by level (principal & interest combined) percent-of-payroll contributions over a reasonable period of future years.

Actuarial Value of Assets - The Actuarial Value of Assets phase in the difference between the expected actuarial value and actual market value of assets at the rate of 20% per year. The Actuarial Value of Assets will be further adjusted to the extent necessary to fall within the corridor whose lower limit is 80% of the Market Value of plan assets and whose upper limit is 120% of the Market Value of plan assets. During periods when investment performance exceeds the assumed rate, Actuarial Value of Assets will tend to be less than Market Value. During periods when investment performance is less than assumed rate, Actuarial Value of Assets will tend to be greater than Market Value.

VALUATION ASSUMPTIONS

The actuarial assumptions used in the valuation are shown in this Section.

ECONOMIC ASSUMPTIONS

The investment return rate assumed in the valuation is 6.9% per year, compounded annually (net after investment expenses).

The **Wage Inflation Rate** assumed in this valuation is 2.5% per year. The Wage Inflation Rate is defined to be the portion of total pay increases for an individual that are due to macro economic forces including productivity, price inflation, and labor market conditions. The wage inflation rate does not include pay changes related to individual merit and seniority effects.

The **Price Inflation Rate** assumed in this valuation was 2.25% per year.

The assumed **real rate of return** over price inflation is defined to be the portion of total investment return that is more than the assumed price inflation rate. Considering other economic assumptions, the 6.9% investment return rate translates to an assumed real rate of return over price inflation of 4.65%.



The rates of salary increase are as follows and are based on the Experience Study dated November 2, 2020.

Age	% Increase in Salary		
	Merit and Seniority	Price Inflation	Total Increase
Under 25	9.50%	2.25%	11.75%
25-29	4.50%	2.25%	6.75%
30-39	3.50%	2.25%	5.75%
40 & Over	2.25%	2.25%	4.50%

Projected service retirement benefits are increased to allow for the inclusion of unused sick and vacation pay in average final earnings. The increase amount is unique for each member based on the number of hours of accumulated sick and vacation time reported for each member as of June 18, 2013.

For purposes of financing the unfunded liabilities, total payroll is assumed to grow at the Wage Inflation assumption of 2.50% per year using a forward looking methodology, as permitted under Florida Statutes, Chapter 112.64(5)(b).

DEMOGRAPHIC ASSUMPTIONS

The mortality tables are based on the PUB-2010 Mortality Tables described below, with mortality improvements projected for healthy lives to all future years after 2010 using Scale MP-2021.

	Pre-Retirement PUB-2010 Table	Post-Retirement PUB-2010 Table
Female Healthy	Benefits Weighted Safety Healthy Employee Female Table	Benefits Weighted Safety Healthy Retiree Female Table
Male Healthy	Benefits Weighted Healthy Employee Male Table, ages set forward 1 year	Benefits Weighted Safety Healthy Retiree Male Table, with ages set forward 1 year
Female Disabled	N/A	Headcount Weighted General Disabled Retiree Female Table, with ages set forward 1 year
Male Disabled	N/A	Headcount Weighted General Disabled Retiree Male Table
Female Survivors	N/A	Headcount Weighted General Healthy Retiree Female Table
Male Disabled	N/A	Headcount Weighted General Healthy Retiree Male Table, with ages set forward 1 year

These are the same rates as used by the Florida Retirement System (FRS) in their July 1, 2024 Actuarial Valuation Report for Special Risk class members. Florida Statutes Chapter 112.63(1)(f) mandates the use of the mortality tables used in either of the two most recently published actuarial valuation reports of FRS.



FRS Healthy Post-Retirement Mortality for Special Risk Class Members

Sample Attained Ages (in 2025)	Probability of Dying Next Year		Future Life Expectancy (years)	
	Men	Women	Men	Women
50	0.20 %	0.13 %	34.83	37.81
55	0.32	0.25	29.78	32.70
60	0.57	0.45	24.92	27.78
65	0.98	0.72	20.34	23.11
70	1.61	1.15	16.10	18.70
75	2.77	1.97	12.26	14.61
80	5.02	3.53	8.93	10.98

This assumption is used to measure the probabilities of each benefit payment being made after retirement.

FRS Healthy Pre-Retirement Mortality for Special Risk Class Members

Sample Attained Ages (in 2025)	Probability of Dying Next Year		Future Life Expectancy (years)	
	Men	Women	Men	Women
50	0.12 %	0.08 %	37.31	40.61
55	0.18	0.12	32.21	35.50
60	0.29	0.17	27.20	30.44
65	0.46	0.21	22.32	25.42
70	0.79	0.39	17.61	20.48
75	1.41	0.77	13.13	15.70
80	5.02	1.60	8.93	11.19

This assumption is used to measure the probabilities of active members dying prior to retirement (75% of deaths are assumed to be service connected).

FRS Disabled Mortality for Special Risk Class Members

Sample Attained Ages (in 2025)	Probability of Dying Next Year		Future Life Expectancy (years)	
	Men	Women	Men	Women
50	1.61 %	1.38 %	25.55	28.20
55	2.09	1.73	22.07	24.57
60	2.73	2.14	18.92	21.18
65	3.36	2.41	16.06	17.92
70	3.96	2.88	13.35	14.66
75	4.99	4.01	10.70	11.51
80	7.06	6.23	8.23	8.71

This assumption is used to measure the probabilities of each benefit payment being made after retirement for disabled retirees.



The rates of retirement used to measure the probability of eligible members retiring during the next year are as follows and are based on the Experience Study dated November 2, 2020.

S e r v i c e	Age					
	under 45	45-49	50	51-54	55-59	60
10 - 14	N/A	N/A	5.0%	5.0%	60.0%	100.0%
15	N/A	N/A	60.0%	40.0%	60.0%	100.0%
16 - 19	N/A	N/A	60.0%	10.0%	60.0%	100.0%
20	60.0%	80.0%	60.0%	10.0%	100.0%	100.0%
21 - 24	40.0%	40.0%	40.0%	10.0%	100.0%	100.0%
25+	100.0%	100.0%	100.0%	100.0%	100.0%	100.0%

Upon reaching a benefit of 85% of Average Final Compensation (the maximum benefit), members are assumed to have a 100% probability of retirement.

Rates of separation from active membership are as shown below (rates do not apply to members eligible to retire and do not include separation due to death/disability) and are based on the Experience Study dated November 2, 2020.

Years of Service	Sample Ages	% of Active Members Separating Within Next Year
0 - 1	ALL	16.0%
1 - 2		11.0%
2 - 3		7.5%
3 - 4		7.5%
4 - 5		5.0%
5 - 9		4.0%
10 - 14		3.0%
15 and over	Under 40	3.0%
	40 - 49	1.5%
	50 and over	0.0%

Rates of disability among active members (90% of disabilities are assumed to be service connected) are based on the Experience Study dated November 2, 2020.

Sample Ages	% Becoming Disabled within Next Year
20	0.09 %
25	0.10 %
30	0.12 %
35	0.15 %
40	0.20 %
45	0.34 %
50	0.67 %
55	1.03 %



MISCELLANEOUS AND TECHNICAL ASSUMPTIONS

<i>Administrative & Investment Expenses</i>	The investment return assumption is intended to be the return net of investment expenses. Annual administrative expenses are assumed to be equal to the average of the prior two years' expenses. Assumed administrative expenses are added to the Normal Cost.
<i>Benefit Service</i>	Exact fractional service is used to determine the amount of benefit payable.
<i>Decrement Operation</i>	Disability and mortality decrements operate during retirement eligibility.
<i>Decrement Timing</i>	Decrements of all types are assumed to occur at the beginning of the year.
<i>Eligibility Testing</i>	Eligibility for benefits is determined based upon the age nearest birthday and service nearest whole year on the date the decrement is assumed to occur.
<i>Forfeitures</i>	For vested separations from service, it is assumed that 0% of members separating will withdraw their contributions and forfeit an employer financed benefit. It was further assumed that the liability at termination is the greater of the vested deferred benefit (if any) or the member's accumulated contributions.
<i>Incidence of Contributions</i>	Employer contributions are assumed to be made at the beginning of the year effective October 1, 2011. Member contributions are assumed to be received continuously throughout the year based upon the computed percent of payroll shown in this report, and the actual payroll payable at the time contributions are made.
<i>Liability Load</i>	Projected normal and early retirement benefits are loaded by a unique amount for each member to allow for the inclusion of unused sick and vacation pay in final average earnings. These individual loads are based on the number of hours of unused accumulated sick and vacation time reported for each member as of June 18, 2013. Normal Retirement liabilities for active members and retiree liabilities for retirees with DROP accounts are each increased by 0.7% and 0.4%, respectively, to account for a guaranteed rate of return on DROP accounts (7.0%) that is higher than the assumed rate of return.
<i>Marriage Assumption</i>	100% of males and 100% of females are assumed to be married for purposes of death-in-service benefits. Male spouses are assumed to be three years older than female spouses for active member valuation purposes.
<i>Normal Form of Benefit</i>	A 10-year certain and life annuity is the normal form of benefit.



Pay Increase Timing

Middle of fiscal year. This is equivalent to assuming that reported pays represent amounts paid to members during the year ended on the valuation date.

GLOSSARY

<i>Actuarial Accrued Liability (AAL)</i>	The difference between the Actuarial Present Value of Future Benefits, and the Actuarial Present Value of Future Normal Costs.
<i>Actuarial Assumptions</i>	Assumptions about future plan experience that affect costs or liabilities, such as: mortality, withdrawal, disablement, and retirement; future increases in salary; future rates of investment earnings; future investment and administrative expenses; characteristics of members not specified in the data, such as marital status; characteristics of future members; future elections made by members; and other items.
<i>Actuarial Cost Method</i>	A procedure for allocating the Actuarial Present Value of Future Benefits between the Actuarial Present Value of Future Normal Costs and the Actuarial Accrued Liability.
<i>Actuarial Equivalent</i>	Of equal Actuarial Present Value, determined as of a given date and based on a given set of Actuarial Assumptions.
<i>Actuarial Present Value (APV)</i>	The amount of funds required to provide a payment or series of payments in the future. It is determined by discounting the future payments with an assumed interest rate and with the assumed probability each payment will be made.
<i>Actuarial Present Value of Future Benefits (APVFB)</i>	The Actuarial Present Value of amounts which are expected to be paid at various future times to active members, retired members, beneficiaries receiving benefits, and inactive, nonretired members entitled to either a refund or a future retirement benefit. Expressed another way, it is the value that would have to be invested on the valuation date so that the amount invested plus investment earnings would provide sufficient assets to pay all projected benefits and expenses when due.
<i>Actuarial Valuation</i>	The determination, as of a valuation date, of the Normal Cost, Actuarial Accrued Liability, Actuarial Value of Assets, and related Actuarial Present Values for a plan. An Actuarial Valuation for a governmental retirement system typically also includes calculations of items needed for compliance with GASB, such as the Funded Ratio and the Actuarially Determined Contribution (ADEC).
<i>Actuarial Value of Assets</i>	The value of the assets as of a given date, used by the actuary for valuation purposes. This may be the market or fair value of plan assets or a smoothed value in order to reduce the year-to-year volatility of calculated results, such as the funded ratio and the Actuarially Determined contribution (ADEC).

<i>Actuarially Determined Contribution (ADEC)</i>	The employer's periodic required contributions, expressed as a dollar amount or a percentage of covered plan compensation, determined under GASB. The ADEC consists of the Employer Normal Cost and Amortization Payment.
<i>Amortization Method</i>	A method for determining the Amortization Payment. The most common methods used are level dollar and level percentage of payroll. Under the Level Dollar method, the Amortization Payment is one of a stream of payments, all equal, whose Actuarial Present Value is equal to the UAAL. Under the Level Percentage of Pay method, the Amortization Payment is one of a stream of increasing payments, whose Actuarial Present Value is equal to the UAAL. Under the Level Percentage of Pay method, the stream of payments increases at the rate at which total covered payroll of all active members is assumed to increase.
<i>Amortization Payment</i>	That portion of the plan contribution or ADEC which is designed to pay interest on and to amortize the Unfunded Actuarial Accrued Liability.
<i>Amortization Period</i>	The period used in calculating the Amortization Payment.
<i>Closed Amortization Period</i>	A specific number of years that is reduced by one each year, and declines to zero with the passage of time. For example if the amortization period is initially set at 30 years, it is 29 years at the end of one year, 28 years at the end of two years, etc.
<i>Employer Normal Cost</i>	The portion of the Normal Cost to be paid by the employer. This is equal to the Normal Cost less expected member contributions.
<i>Equivalent Single Amortization Period</i>	For plans that do not establish separate amortization bases (separate components of the UAAL), this is the same as the Amortization Period. For plans that do establish separate amortization bases, this is the period over which the UAAL would be amortized if all amortization bases were combined upon the current UAAL payment.
<i>Experience Gain/Loss</i>	A measure of the difference between actual experience and that expected based upon a set of Actuarial Assumptions, during the period between two actuarial valuations. To the extent that actual experience differs from that assumed, Unfunded Actuarial Accrued Liabilities emerge which may be larger or smaller than projected. Gains are due to favorable experience, e.g., the assets earn more than projected, salaries do not increase as fast as assumed, members retire later than assumed, etc. Favorable experience means actual results produce actuarial liabilities not as large as projected by the actuarial assumptions. On the other hand, losses are the result of unfavorable experience, i.e., actual results that produce Unfunded Actuarial Accrued Liabilities which are larger than projected.
<i>Funded Ratio</i>	The ratio of the Actuarial Value of Assets to the Actuarial Accrued Liability.



<i>GASB</i>	Governmental Accounting Standards Board.
<i>GASB No. 68 and GASB No. 67</i>	These are the governmental accounting standards that set the accounting rules for public retirement systems and the employers that sponsor or contribute to them. Statement No. 68 sets the accounting rules for the employers that sponsor or contribute to public retirement systems, while Statement No. 67 sets the rules for the systems themselves.
<i>Normal Cost</i>	The annual cost assigned, under the Actuarial Cost Method, to the current plan year.
<i>Open Amortization Period</i>	An open amortization period is one which is used to determine the Amortization Payment but which does not change over time. In other words, if the initial period is set as 30 years, the same 30-year period is used in determining the Amortization Period each year. In theory, if an Open Amortization Period is used to amortize the Unfunded Actuarial Accrued Liability, the UAAL will never completely disappear, but will become smaller each year, either as a dollar amount or in relation to covered payroll.
<i>Unfunded Actuarial Accrued Liability</i>	The difference between the Actuarial Accrued Liability and Actuarial Value of Assets.
<i>Valuation Date</i>	The date as of which the Actuarial Present Value of Future Benefits are determined. The benefits expected to be paid in the future are discounted to this date.

SECTION C

PENSION FUND INFORMATION

SUMMARY OF ASSETS

Item	September 30	
	2025	2024
A. Cash and Cash Equivalents (Operating Cash)	\$ 75,546	\$ 50,640
B. Receivables:		
1. Member Contributions	\$ -	\$ -
2. Employer Contributions	38,996	-
3. State Contributions	-	-
4. Buy-Back Installment Payments	-	-
5. Receivables for Securities Sold plus Prepaid Expenses	3,115,571	1,768,509
6. DROP Loans	197,857	169,035
7. Total Receivables	\$ 3,352,424	\$ 1,937,544
C. Investments		
1. Short-Term Investments	\$ 29,241	\$ 158
2. Domestic Equities	89,544,562	110,889,718
3. International Equities	31,150,681	-
4. Domestic Fixed Income	47,770,604	44,412,082
5. Real Estate	4,485,961	3,408,256
6. Alternative Investments (Infrastructure/Private Debt)	9,275,946	-
7. Total Investments	\$ 182,256,995	\$ 158,710,214
D. Liabilities and Reserves		
1. Benefits Payable	\$ -	\$ -
2. Accrued Expenses and Other Payables	(2,547,698)	(135,412)
3. Total Liabilities and Reserves	\$ (2,547,698)	\$ (135,412)
E. Total Market Value of Assets Available for Benefits	\$ 183,137,267	\$ 160,562,986
F. Reserves		
1. State Contribution Reserve	\$ (639,848)	\$ (575,586)
2. DROP Accounts	(30,345,414)	(26,164,797)
3. Supplemental Benefit Reserve	(3,476,662)	(3,122,463)
4. Total Reserves	\$ (34,461,924)	\$ (29,862,846)
G. Market Value Net of Reserves	\$ 148,675,343	\$ 130,700,140
H. Allocation of Investments		
1. Short-Term Investments	0.02%	0.00%
2. Domestic Equities	49.13%	69.87%
3. International Equities	17.09%	0.00%
4. Domestic Fixed Income	26.21%	27.98%
5. Real Estate	2.46%	2.15%
6. Alternative Investments	5.09%	0.00%
7. Total Investments	100.00%	100.00%



PENSION FUND DISBURSEMENTS & INCOME

Item	September 30	
	2025	2024
A. Market Value of Assets at Beginning of Year	\$ 160,562,986	\$ 126,389,032
B. Revenues and Expenditures		
1. Contributions		
a. Employee Contributions	\$ 1,611,782	\$ 1,444,751
b. Employer Contributions	8,555,476	7,863,802
c. State Contributions	1,271,069	1,187,462
d. Buy Back Contributions	213,974	182,734
e. DROP Rollover	175,289	100,125
f. Change in Value of Remaining Buy Back Payments	-	-
g. Total	<u>\$ 11,827,590</u>	<u>\$ 10,778,874</u>
2. Investment Income		
a. Interest, Dividends, and Other Income	\$ 1,445,518	\$ 797,543
b. Net Realized Gains/(Losses)	7,715,984	7,370,995
c. Net Unrealized Gain/(Losses)	11,902,914	25,001,967
d. Investment Expenses	(381,995)	(391,903)
e. Net Investment Income	<u>\$ 20,682,421</u>	<u>\$ 32,778,602</u>
3. Benefits and Refunds		
a. Refunds	\$ (145,673)	\$ (108,810)
b. Regular Monthly Benefits to Retirees	(8,026,989)	(7,973,746)
c. Supplemental Distributions and DROP Loans	(920,920)	(639,311)
d. DROP Distributions	(650,734)	(481,049)
e. Total	<u>\$ (9,744,316)</u>	<u>\$ (9,202,916)</u>
4. Administrative and Miscellaneous Expenses	\$ (191,414)	\$ (180,606)
5. Transfers	\$ -	\$ -
C. Market Value of Assets at End of Year	\$ 183,137,267	\$ 160,562,986
D. Reserves		
1. State Contribution Reserve	\$ (639,848)	\$ (575,586)
2. DROP Accounts	(30,345,414)	(26,164,797)
3. Supplemental Benefit Reserve	(3,476,662)	(3,122,463)
4. Total Reserves	<u>\$ (34,461,924)</u>	<u>\$ (29,862,846)</u>
E. Market Value Net of Reserves	\$ 148,675,343	\$ 130,700,140



ACTUARIAL VALUE OF ASSETS

Valuation Date – September 30	2024	2025	2026	2027	2028	2029
A. Actuarial Value of Assets Beginning of Year	\$ 137,019,814	\$ 149,452,428	\$ -	\$ -	\$ -	\$ -
B. Market Value End of Year	160,562,986	183,137,267	-	-	-	-
C. Market Value Beginning of Year	126,389,032	160,562,986	-	-	-	-
D. Non-Investment/Administrative Net Cash Flow	1,395,352	1,891,860				
E. Investment Income						
E1. Actual Market Total: B-C-D	32,778,602	20,682,421	-	-	-	-
E2. Assumed Rate of Return	6.90%	6.90%	6.90%	6.90%	6.90%	6.90%
E3. Assumed Amount of Return	9,773,808	10,672,651	-	-	-	-
E4. Amount Subject to Phase-In: E1–E3	23,004,794	10,009,770	-	-	-	-
F. Phase-In Recognition of Investment Income						
F1. Current Year: 0.2 x E4	4,600,959	2,001,954	-	-	-	-
F2. First Prior Year	555,272	4,600,959	2,001,954	-	-	-
F3. Second Prior Year	(5,727,177)	555,272	4,600,959	2,001,954	-	-
F4. Third Prior Year	2,495,262	(5,727,177)	555,272	4,600,959	2,001,954	-
F5. Fourth Prior Year	(660,862)	2,495,261	(5,727,178)	555,273	4,600,958	2,001,954
F6. Total Phase-Ins	1,263,454	3,926,269	1,431,007	7,158,186	6,602,912	2,001,954
G. Actuarial Value of Assets End of Year						
G1. Preliminary Actuarial Value of Assets:	\$ 149,452,428	\$ 165,943,208	\$ -	\$ -	\$ -	\$ -
G2. Upper Corridor Limit: 120%*B	192,675,583	219,764,720	-	-	-	-
G3. Lower Corridor Limit: 80%*B	128,450,389	146,509,814	-	-	-	-
G4. Funding Value End of Year	149,452,428	165,943,208	-	-	-	-
G5. Less: State Contribution Reserve	(575,586)	(639,848)	-	-	-	-
G6. Less: DROP Account Balances	(26,164,797)	(30,345,414)	-	-	-	-
G7. Less: Supplemental Benefit Reserve	(3,122,463)	(3,476,662)	-	-	-	-
G8. Final Funding Value End of Year	119,589,582	131,481,284	-	-	-	-
H. Difference between Market & Actuarial Value	\$ 11,110,558	\$ 17,194,059	\$ -	\$ -	\$ -	\$ -
I. Actuarial Rate of Return	7.79%	9.44%	0.00%	0.00%	0.00%	0.00%
J. Market Value Rate of Return	25.02%	12.48%	0.00%	0.00%	0.00%	0.00%
K. Ratio of Actuarial Value to Market Value	93.08%	90.61%	0.00%	0.00%	0.00%	0.00%



RECONCILIATION OF DROP ACCOUNTS

Value at beginning of year	\$ 26,164,797
Adjustment to beginning of year balances	+ (73,422)
Payments credited to accounts	+ 2,785,324
Rollovers into DROP account	+ 175,289
Investment Earnings credited	+ 1,996,561
Withdrawals from accounts	- 650,734
Net Loan Activity	+ <u>(52,401)</u>
Value at end of year	30,345,414

INVESTMENT RATE OF RETURN

Year Ended	Investment Rate of Return	
	Market Value	Actuarial Value
12/31/82	16.4 %	9.3 %
12/31/83	12.3	9.0
12/31/84	11.9	11.5
12/31/85	23.0	16.8
12/31/86	19.0	17.6
12/31/87	0.3	4.4
12/31/88	10.4	9.0
12/31/89	20.6	15.4
9/30/90 (9 mos.)	(1.9)	1.7
9/30/91	14.4	11.6
9/30/92	10.0	9.7
9/30/93	12.6	11.9
9/30/94	1.1	3.5
9/30/95	19.1	12.9
9/30/96	12.8	10.8
9/30/97	20.2	13.1
9/30/98	10.1	12.9
9/30/99	10.5	13.5
9/30/00	9.8	12.1
9/30/01	(9.1)	7.5
9/30/02	(9.2)	(4.7)
9/30/03	16.1	2.8
9/30/04	8.3	2.6
9/30/05	10.6	3.0
9/30/06	6.9	5.7
9/30/07	13.1	9.9
9/30/08	(15.1)	4.2
9/30/09	(0.8)	2.8
9/30/10	10.2	3.0
9/30/11	(0.6)	1.6
9/30/12	18.0	6.9
9/30/13	9.8	7.0
9/30/14	10.3	8.9
9/30/15	1.9	7.5
9/30/16	10.6	9.3
9/30/17	9.9	8.3
9/30/18	6.5	7.5
9/30/19	5.2	6.7
9/30/20	4.3	6.9
9/30/21	18.1	8.4
9/30/22	(14.4)	3.5
9/30/23	10.3	4.1
9/30/24	25.0	7.8
9/30/25	12.5	9.4
Average Returns:		
Last Five Years	9.4 %	6.6 %
Last Ten Years	8.3 %	7.2 %
All Years	8.5 %	7.8 %



SECTION D

FINANCIAL ACCOUNTING INFORMATION

FASB NO. 35 INFORMATION

A. Valuation Date	October 1, 2025	October 1, 2024
B. Actuarial Present Value of Accumulated Plan Benefits		
1. Vested Benefits		
a. Members Currently Receiving Payments	\$ 138,227,351	\$ 124,560,222
b. Terminated Vested Members	4,487,986	4,754,496
c. Other Members	36,175,334	37,861,157
d. Total	<u>178,890,671</u>	<u>167,175,875</u>
2. Non-Vested Benefits	3,051,534	1,971,713
3. Total Actuarial Present Value of Accumulated Plan Benefits: 1d + 2	181,942,205	169,147,588
4. Accumulated Contributions of Active Members	7,032,514	6,841,442
C. Changes in the Actuarial Present Value of Accumulated Plan Benefits		
1. Total Value at Beginning of Year	169,147,588	160,631,939
2. Increase (Decrease) During the Period Attributable to:		
a. Plan Amendment	0	22,737
b. Change in Actuarial Assumptions	3,760,018	0
c. Latest Member Data, Benefits Accumulated and Decrease in the Discount Period	19,981,619	18,715,409
d. Benefits Paid (Net basis, including credits to DROP accounts)	<u>(10,947,020)</u>	<u>(10,222,497)</u>
e. Net Increase	12,794,617	8,515,649
3. Total Value at End of Period	181,942,205	169,147,588
D. Market Value of Assets	148,675,343	130,700,140
E. Actuarial Assumptions - See page entitled Actuarial Assumptions and Methods		

**SCHEDULE OF CHANGES IN THE EMPLOYER'S
NET PENSION LIABILITY AND RELATED RATIOS
GASB Statement No. 67**

Fiscal year ending September 30,	2026*	2025	2024
Total pension liability			
Service Cost	\$ 4,365,087	\$ 4,076,407	\$ 3,663,661
Interest	15,312,025	14,457,129	13,638,560
Benefit Changes	-	-	96,979
Difference between actual & expected experience	4,776,702	3,364,149	2,516,640
Assumption Changes	4,522,057	-	-
Benefit Payments	(11,813,453)	(9,598,643)	(9,094,106)
Refunds	(108,747)	(145,673)	(108,810)
Other (Adjustments to Reserves)	975,982	1,097,405	919,289
Net Change in Total Pension Liability	18,029,653	13,250,774	11,632,213
Total Pension Liability - Beginning	223,021,425	209,770,651	198,138,438
Total Pension Liability - Ending (a)	\$ 241,051,078	\$ 223,021,425	\$ 209,770,651
Plan Fiduciary Net Position			
Contributions - Employer (from City)	\$ 9,112,337	\$ 8,555,476	\$ 7,863,802
Contributions - Employer (from State)	1,271,069	1,271,069	1,187,462
Contributions - Non-Employer Contributing Entity	-	-	-
Contributions - Member	1,615,000	1,825,756	1,627,485
Net Investment Income	12,914,170	20,682,421	32,778,602
Benefit Payments	(11,813,453)	(9,598,643)	(9,094,106)
Refunds	(108,747)	(145,673)	(108,810)
Administrative Expense	(186,010)	(191,414)	(180,606)
Other	-	175,289	100,125
Net Change in Plan Fiduciary Net Position	12,804,366	22,574,281	34,173,954
Plan Fiduciary Net Position - Beginning	183,137,267	160,562,986	126,389,032
Plan Fiduciary Net Position - Ending (b)	\$ 195,941,633	\$ 183,137,267	\$ 160,562,986
Net Pension Liability - Ending (a) - (b)	45,109,445	39,884,158	49,207,665
Plan Fiduciary Net Position as a Percentage of Total Pension Liability	81.29 %	82.12 %	76.54 %
Covered Payroll	\$ 17,000,000	\$ 16,767,308	\$ 15,085,030
Net Pension Liability as a Percentage of Covered Payroll	265.35 %	237.87 %	326.20 %

* These figures are estimates only. Actual figures will be provided after the end of the fiscal year. Note that only three years are shown here for summary purposes. The actual September 30, 2025 GASB 67 disclosure report will include all years.



SCHEDULE OF THE EMPLOYER'S NET PENSION LIABILITY
GASB Statement No. 67

FY Ending September 30,	Total Pension Liability	Plan Net Position	Net Pension Liability	Plan Net Position as a % of Total Pension Liability	Covered Payroll	Net Pension Liability as a % of Covered Payroll
2017	\$ 133,418,274	\$ 95,209,495	\$ 38,208,779	71.36%	\$ 11,834,364	322.86%
2018	145,145,193	101,982,716	43,162,477	70.26%	11,552,888	373.61%
2019	151,965,967	107,146,116	44,819,851	70.51%	11,268,875	397.73%
2020	159,571,394	111,813,658	47,757,736	70.07%	12,682,527	376.56%
2021	173,112,174	132,894,569	40,217,605	76.77%	13,006,567	309.21%
2022	186,222,489	113,761,786	72,460,703	61.09%	14,000,725	517.55%
2023	198,138,438	126,389,032	71,749,406	63.79%	13,326,649	538.39%
2024	209,770,651	160,562,986	49,207,665	76.54%	15,085,030	326.20%
2025	223,021,425	183,137,267	39,884,158	82.12%	16,767,308	237.87%
2026*	241,051,078	195,941,633	45,109,445	81.29%	17,000,000	265.35%

*** These figures are estimates only. Actual figures will be provided after the end of the fiscal year.**

NOTES TO NET PENSION LIABILITY
GASB Statement No. 67

Valuation Date: October 1, 2025
Measurement Date: September 30, 2026

Methods and Assumptions Used to Determine Net Pension Liability:

Actuarial Cost Method	Entry Age Normal
Inflation	2.25%
Salary Increases	4.5% to 11.75% depending on age, including inflation.
Investment Rate of Return	6.90%
Retirement Age	Experience-based table of rates that are specific to the type of eligibility condition.
Mortality	The same versions of Pub-2010 Mortality Tables as used by the Florida Retirement System (FRS) for Special Risk Class members in their July 1, 2024 actuarial valuation (with mortality improvements projected to all future years after 2010 using Scale MP-2021). Florida Statutes Chapter 112.63(1)(f) mandates the use of mortality tables from one of the two most recently published FRS actuarial valuation reports.

Other Information:

Notes See Discussion of Valuation Results on Page 1.



SCHEDULE OF CONTRIBUTIONS
GASB Statement No. 67

FY Ending September 30,	Actuarially Determined Contribution	Actual Contribution	Contribution Deficiency (Excess)	Covered Payroll	Actual Contribution as a % of Covered Payroll
2017	\$ 5,256,615	\$ 5,256,615	\$ -	\$ 11,834,364	44.42%
2018	5,820,145	5,820,145	-	11,552,888	50.38%
2019	6,272,374	6,274,800	(2,426)	11,268,875	55.68%
2020	6,280,602	6,280,602	-	12,682,527	49.52%
2021	6,464,517	6,464,517	-	13,006,567	49.70%
2022	7,154,550	7,154,550	-	14,000,725	51.10%
2023	7,601,166	7,601,166	-	13,326,649	57.04%
2024	8,328,889	8,328,889	-	15,085,030	55.21%
2025	9,020,563	9,020,563	-	16,767,308	53.80%
2026*	9,577,424	9,577,424	-	17,000,000	56.34%

* These figures are estimates only. Actual figures will be provided after the end of the fiscal year.



NOTES TO SCHEDULE OF CONTRIBUTIONS
GASB Statement No. 67

Valuation Date: October 1, 2024
Notes Actuarially determined contribution rates are calculated as of the October 1st which is two years prior to the end of the fiscal year in which contributions are reported.

Methods and Assumptions Used to Determine Contribution Rates:

Actuarial Cost Method	Entry Age Normal
Amortization Method	Level Percentage of Payroll, Closed
Remaining Amortization Period	14 years (single equivalent period)
Asset Valuation Method	5-year smoothed market
Inflation	2.25%
Salary Increases	4.5% to 11.75% depending on age, including inflation.
Investment Rate of Return	6.90%
Retirement Age	Experience-based table of rates that are specific to the type of eligibility condition.
Mortality	The same versions of Pub-2010 Mortality Tables as used by the Florida Retirement System (FRS) for Special Risk Class members in their July 1, 2023 actuarial valuation (with mortality improvements projected for non-disabled lives to all future years after 2010 using Scale MP-2018). Florida Statutes Chapter 112.63(1)(f) mandates the use of mortality tables from one of the two most recently published FRS actuarial valuation reports.

Other Information:
Notes See Discussion of Valuation Results in the October 1, 2024 Actuarial Valuation Report dated May 12, 2025.



SINGLE DISCOUNT RATE
GASB Statement No. 67

A single discount rate of 6.90% was used to measure the total pension liability. This single discount rate was based on the expected rate of return on pension plan investments of 6.90%. The projection of cash flows used to determine this single discount rate assumed that plan member contributions will be made at the current contribution rate and that employer contributions will be made at rates equal to the difference between the total actuarially determined contribution rates and the member rate. Based on these assumptions, the pension plan’s fiduciary net position was projected to be available to make all projected future benefit payments of current plan members. Therefore, the long-term expected rate of return on pension plan investments (6.90%) was applied to all periods of projected benefit payments to determine the total pension liability.

Regarding the sensitivity of the net pension liability to changes in the single discount rate, the following presents the plan’s net pension liability, calculated using a single discount rate of 6.90%, as well as what the plan’s net pension liability would be if it were calculated using a single discount rate that is 1-percentage-point lower or 1-percentage-point higher:

Sensitivity of the Net Pension Liability to the Single Discount Rate Assumption*

1% Decrease 5.90%	Current Single Discount Rate Assumption 6.90%	1% Increase 7.90%
\$69,470,334	\$45,109,445	\$25,058,919

* These figures are estimates only. Actual figures will be provided after the end of the fiscal year.

SECTION E

MISCELLANEOUS INFORMATION

RECONCILIATION OF MEMBERSHIP DATA		
	From 10/1/24 To 10/1/25	From 10/1/23 To 10/1/24
A. Active Members		
1. Number Included in Last Valuation	123	115
2. New Members Included in Current Valuation	17	22
3. Non-Vested Employment Terminations	(4)	(6)
4. Vested Employment Terminations	(1)	(3)
5. DROP Participation	(7)	(5)
6. Service Retirements	(1)	0
7. Disability Retirements	0	0
8. Deaths	0	0
9. Other--Rehires	0	0
10. Number Included in This Valuation	127	123
B. Terminated Vested Members		
1. Number Included in Last Valuation	18	18
2. Additions from Active Members	1	3
3. Lump Sum Payments/Refund of Contributions	0	(2)
4. Payments Commenced	(4)	(1)
5. Deaths	0	0
6. Other--Rehires	0	0
7. Number Included in This Valuation	15	18
C. DROP Plan Members		
1. Number Included in Last Valuation	28	25
2. Additions from Active Members	7	5
3. Retirements	(1)	(2)
4. Deaths Resulting in No Further Payments	0	0
5. Other	0	0
6. Number Included in This Valuation	34	28
D. Service Retirees, Disability Retirees and Beneficiaries		
1. Number Included in Last Valuation	161	158
2. Additions from Active Members	1	0
3. Additions from Terminated Vested Members	4	1
4. Additions from DROP Plan	1	2
5. Deaths Resulting in No Further Payments	(1)	0
6. Deaths Resulting in New Survivor Benefits	0	0
7. End of Certain Period - No Further Payments	0	0
8. Other -- Lump Sum Distributions	0	0
9. Number Included in This Valuation	166	161



ACTIVE PARTICIPANT SCATTER

Age Group	Years of Service to Valuation Date										Totals	
	0-1	1-2	2-3	3-4	4-5	5-9	10-14	15-19	20-24	25+		
20-24 NO.	4	1	0	0	0	0	0	0	0	0	0	5
TOT PAY	332,632	89,739	0	0	0	0	0	0	0	0	0	422,371
AVG PAY	83,158	89,739	0	0	0	0	0	0	0	0	0	84,474
25-29 NO.	4	5	6	1	3	0	0	0	0	0	0	19
TOT PAY	351,673	460,240	596,333	92,226	296,909	0	0	0	0	0	0	1,797,381
AVG PAY	87,918	92,048	99,389	92,226	98,970	0	0	0	0	0	0	94,599
30-34 NO.	3	11	2	4	1	11	0	0	0	0	0	32
TOT PAY	263,795	1,003,723	192,543	379,993	108,316	1,612,435	0	0	0	0	0	3,560,805
AVG PAY	87,932	91,248	96,272	94,998	108,316	146,585	0	0	0	0	0	111,275
35-39 NO.	3	2	0	1	2	9	11	3	0	0	0	31
TOT PAY	251,812	192,171	0	98,017	234,166	1,367,681	1,746,384	566,041	0	0	0	4,456,272
AVG PAY	83,937	96,086	0	98,017	117,083	151,965	158,762	188,680	0	0	0	143,751
40-44 NO.	1	2	2	0	1	4	2	12	0	0	0	24
TOT PAY	83,158	202,531	215,455	0	89,850	527,477	331,548	1,989,830	0	0	0	3,439,849
AVG PAY	83,158	101,266	107,728	0	89,850	131,869	165,774	165,819	0	0	0	143,327
45-49 NO.	0	0	1	0	0	0	4	7	0	0	0	12
TOT PAY	0	0	132,390	0	0	0	706,634	1,066,511	0	0	0	1,905,535
AVG PAY	0	0	132,390	0	0	0	176,659	152,359	0	0	0	158,795
50-54 NO.	0	0	0	0	0	1	0	0	0	0	0	1
TOT PAY	0	0	0	0	0	155,012	0	0	0	0	0	155,012
AVG PAY	0	0	0	0	0	155,012	0	0	0	0	0	155,012
55-59 NO.	0	0	0	1	0	0	1	0	0	0	0	2
TOT PAY	0	0	0	201,065	0	0	134,778	0	0	0	0	335,843
AVG PAY	0	0	0	201,065	0	0	134,778	0	0	0	0	167,922
60-64 NO.	0	0	0	0	0	1	0	0	0	0	0	1
TOT PAY	0	0	0	0	0	216,962	0	0	0	0	0	216,962
AVG PAY	0	0	0	0	0	216,962	0	0	0	0	0	216,962
TOT NO.	15	21	11	7	7	26	18	22	0	0	0	127
TOT AMT	1,283,070	1,948,404	1,136,721	771,301	729,241	3,879,567	2,919,344	3,622,382	0	0	0	16,290,030
AVG AMT	85,538	92,781	103,338	110,186	104,177	149,214	162,186	164,654	0	0	0	128,268



INACTIVE PARTICIPANT SCATTER

Age Group	Terminated Vested		Disabled		Retired		Deceased with Beneficiary	
	Number	Total Benefits	Number	Total Benefits	Number	Total Benefits	Number	Total Benefits
Under 20	-	-	-	-	-	-	-	-
20-24	-	-	-	-	-	-	-	-
25-29	-	-	-	-	-	-	-	-
30-34	-	-	-	-	-	-	-	-
35-39	2	70,360	-	-	-	-	-	-
40-44	7	126,594	-	-	6	422,781	1	64,564
45-49	4	111,673	-	-	19	1,554,541	-	-
50-54	2	62,836	2	98,634	33	2,485,626	1	53,739
55-59	-	-	-	-	32	2,039,553	-	-
60-64	-	-	-	-	30	1,607,167	3	81,747
65-69	-	-	4	83,032	29	1,470,905	1	34,254
70-74	-	-	3	61,035	12	531,036	-	-
75-79	-	-	2	64,157	10	441,279	3	94,931
80-84	-	-	2	28,399	6	156,411	1	20,727
85-89	-	-	-	-	-	-	-	-
90-94	-	-	-	-	-	-	-	-
95-99	-	-	-	-	-	-	-	-
100 & Over	-	-	-	-	-	-	-	-
Total	15	371,463	13	335,257	177	10,709,299	10	349,962
Average Age		44		70		61		66

SECTION F

SUMMARY OF PLAN PROVISIONS

SUMMARY OF PLAN PROVISIONS

A. Ordinances

Plan established under the Code of Ordinances for the City of Boynton Beach, Florida, Chapter 18, Article III, and was most recently amended under Ordinance No. 24-013 passed and adopted on its second reading on July 16, 2024. The Plan is also governed by certain provisions of Chapter 185, Florida Statutes, Part VII, Chapter 112, Florida Statutes and the Internal Revenue Code.

B. Effective Date

August 15, 1981

C. Plan Year

October 1 through September 30

D. Type of Plan

Qualified, governmental defined benefit retirement plan; for GASB purposes it is a single employer plan.

E. Eligibility Requirements

All full-time police officers are eligible to participate on the first day of employment.

F. Credited Service

Service is measured as the aggregate numbers of years and fractional parts of years of service for which a police officer made Member Contributions to the plan. No service is credited for any periods of employment for which the member received a refund of their contributions.

G. Compensation

Total cash remuneration including up to 300 hours of overtime and lump sum payments for the lesser of the amount of sick and vacation leave accumulated as of June 18, 2013 or the amount cashed out at retirement, but exclusive of any payments for extra duty or special detail work.

H. Average Final Compensation (AFC)

The average of Compensation over the highest 5 years during the last 10 years of Credited Service.

I. Normal Retirement

Eligibility: All members hired prior to October 1, 2019 may retire on the first day of the month coincident with or next following the earliest of:

(1) age 55 and 10 years of Credited Service, or



- (2) age 50 and 15 years of Credited Service, or
- (3) 20 years of Credited Service regardless of age.

All members hired on or after October 1, 2019 may retire on the first day of the month coincident with or next following the earliest of:

- (1) age 55 and 10 years of Credited Service, or
- (2) 20 years of Credited Service regardless of age.

Benefit: All Members hired prior to October 1, 2015: 3.5% of AFC multiplied by years of Credited Service.

All Members hired on or after October 1, 2015: 3.0% of AFC multiplied by years of Credited Service.

The total benefit is limited to 85% of AFC, provided that in all cases, the benefit will not be less than 2.75% of AFC for each year of Credited Service. However, the 85% of AFC limitation does not apply to Members who were eligible for Normal Retirement as of October 1, 2019.

Normal Form of Benefit: 10 Years Certain and Life thereafter; other options are also available.

COLA None

Supplemental Benefit: A supplemental benefit is paid each year. Please see Item V. for a full description.

J. Early Retirement

Eligibility: A member may elect to retire earlier than the Normal Retirement Eligibility upon attainment of age 50 and 10 years of Credited Service.

Benefit: The Normal Retirement Benefit is reduced by 1.5% for each year by which the Early Retirement date precedes the Normal Retirement date. For this purpose, the Normal Retirement date is the earlier of the date the member would have attained age 55 or completed 20 years of Credited Service (25 years of Credited Service if hired on or after October 1, 2019) had the member continued employment as a police officer.

Normal Form of Benefit: 10 Years Certain and Life thereafter; other options are also available.

COLA: None

Supplemental Benefit: A supplemental benefit is paid each year. Please see Item V. for a full description.



K. Delayed Retirement

Same as Normal Retirement taking into account compensation earned and service credited until the date of actual retirement.

L. Service Connected Disability

Eligibility: Any member who becomes totally and permanently disabled and unable to render useful and efficient service as a police officer as a result of an act occurring in the performance of service for the City is immediately eligible for a disability benefit.

Benefit: 66 2/3% of the member's basic rate of earnings in effect on the date of disability, reduced by amounts payable under Worker's Compensation and Social Security PIA with a minimum benefit being the greater of the accrued Normal Retirement benefit on the date of disability or 42% of AFC.

Normal Form of Benefit: 10 Years Certain and Life thereafter; other options are also available.

COLA: None

Supplemental Benefit: A supplemental benefit is paid each year. Please see Item V. for a full description.

M. Non-Service Connected Disability

Eligibility: Any member with 10 years of Credited Service who becomes totally and permanently disabled and unable to render useful and efficient service as a police officer is eligible for a disability benefit.

Benefit: The accrued Normal Retirement Benefit taking into account compensation earned and service credited as of the date of disability with a minimum benefit equal to 25% of AFC and a maximum benefit equal to 60% of AFC.

Normal Form of Benefit: 10 years Certain and Life thereafter; other options are also available.

COLA: None

Supplemental Benefit: A supplemental benefit is paid each year. Please see Item V. for a full description.

N. Death in the Line of Duty

Eligibility: Any member whose death is determined to be the result of a service incurred injury is eligible for survivor benefits regardless of Credited Service.

Benefit: Spouse will receive the accrued Normal Retirement Benefit taking into account compensation earned and service credited as of the date of death with a minimum



benefit equal to 30% of AFC. If there is no spouse, benefits will be paid to the deceased member's estate.

Normal Form
of Benefit: Paid until death of spouse.

COLA: None

Supplemental
Benefit: A supplemental benefit is paid each year. Please see Item V. for a full description.

O. Other Pre-Retirement Death

Eligibility: Members are eligible for survivor benefits after the completion of 10 or more years of Credited Service.

Benefit: Spouse will receive the accrued Normal Retirement Benefit taking into account compensation earned and service credited as of the date of death. If there is no spouse, benefits will be paid to the deceased member's estate.

Normal Form
of Benefit: Paid until death or remarriage of spouse; or 10 years to the member's estate.

COLA: None

Supplemental
Benefit: A supplemental benefit is paid each year. Please see Item V. for a full description.

The beneficiary of a plan member with less than 10 years of Credited Service at the time of death will receive a refund of the member's accumulated contributions.

P. Post Retirement Death

Benefit determined by the form of benefit elected upon retirement.

Q. Optional Forms

In lieu of electing the Normal Form of benefit, the optional forms of benefits available to all retirees are a Single Life Annuity, the 50%, 66 2/3%, 75% and 100% Contingent Annuitant options and the 50%, 66 2/3%, 75% and 100% Survivor Annuity options.

R. Vested Termination

Eligibility: A member has earned a non-forfeitable right to Plan benefits after the completion of 5 years of Credited Service (10 years of Credited Service if hired on or after October 1, 2016) if they elect to leave their accumulated contributions in the fund.

Benefit: The benefit is the member's accrued Normal Retirement Benefit as of the date of termination.



For members with at least 5 years of Credited Service (10 years of Credited Service if hired on or after October 1, 2016), the benefit begins on the date that would have been the member's Normal Retirement date had they continued employment until attaining age 55 with 10 years of Credited Service or upon reaching what would have been 20 years of Credited Service. Alternatively, members with at least 10 years of Credited Service can elect a reduced Early Retirement benefit any time after age 50.

Normal Form

of Benefit: 10 Years Certain and Life thereafter; other options are also available.

COLA: None

Supplemental

Benefit: A supplemental benefit is paid each year. Please see Item V. for a full description.

Members terminating employment with less than 5 years (10 years of Credited Service if hired on or after October 1, 2016) of Credited Service will receive a refund of their own accumulated contributions.

S. Refunds

Eligibility: All members terminating employment with less than 5 years of Credited Service (10 years of Credited Service if hired on or after October 1, 2016) are eligible. Optionally, vested members (those with 5 or more years of Credited Service if hired prior to October 1, 2016; 10 or more years of Credited Service if hired on or after October 1, 2016) may elect a refund in lieu of the vested benefits otherwise due.

Benefit: Refund of the member's contributions.

T. Member Contributions

8.5% of Compensation. Member contributions in excess of 7.0% of Compensation are used to pay down the Unfunded Actuarial Liability and are not used to reduce the City contribution. For members entering their sixty-first month of DROP participation, 3.0% of Compensation until DROP exit.

U. Employer Contributions

Chapter 185 Premium Tax Refunds and any additional amount determined by the actuary needed to fund the plan properly according to State laws.

V. Supplemental Benefit

All retirees and beneficiaries in pay status are entitled to a monthly supplemental pension benefit paid in a lump sum on October 1 of each year. The supplemental benefit is funded by a 1% of pay contribution from the members (during the first 20 years of service) and a 1% of pay contribution from the Chapter 185 money. The benefit pool is divided according to the total number of shares



of all eligible retirees on a pro-rata basis. The number of shares allotted to each eligible retiree is the sum of credited service at retirement (maximum of 20 years) and the number of years the participant has been retired (maximum of 20 years). An individual retiree's distribution is the number of shares multiplied by the share value. The benefit ceases upon the later of the death of the retired member or beneficiary.

W. Deferred Retirement Option Plan

Eligibility: Plan members who have less than 30 years of Credited Service but have met one of the following criteria are eligible for the DROP:

- (1) age 55 and 10 years of Credited Service, or
- (2) age 50 and 15 years of Credited Service (if hired prior to October 1, 2019), or
- (3) 20 years of Credited Service regardless of age.

Members who meet eligibility must submit a written election to participate in the DROP.

Benefit: The member's Credited Service and FAC are frozen upon entry into the DROP. The monthly retirement benefit as described under Normal Retirement is calculated based upon the frozen Credited Service and FAC.

Maximum

DROP Period: The earlier of 8 years of participation in the DROP or 33 years of employment.

Interest

Credited: The member's DROP account is credited at an interest rate based upon the option chosen by the member. Members must elect 1 of the 3 following options:

1. Gain or loss at the same rate earned by the Plan, or
2. Guaranteed rate of 7%, or
3. A percentage of the DROP credited at the same rate earned by the Plan and the remaining percentage credited with earnings at a guaranteed rate of 7%.

Normal Form

of Benefit: Options include a lump sum, equal annual payments over 5 years, or monthly installments based upon actuarial tables until the balance is paid out.

COLA: None

Supplemental

Benefit: A supplemental benefit is paid each year. Please see Item V. for a full description.

X. Other Ancillary Benefits

There are no ancillary benefits not required by statutes but which might be deemed a City of Boynton Beach Municipal Police Officers' Retirement Fund liability if continued beyond the availability of funding by the current funding source.



Y. Changes Since Previous Valuation

None.